

International Activities

of The Kansai Electric Power Co., Inc.

- Spread KANSAI's power to the world,
Bring the world's dynamism to KANSAI -



Since it was established in 1951, The Kansai Electric has been supplying high-quality electric power to the Kansai region for over half a century. Based on the technology and experience accumulated over the years, The Kansai Electric is keen to contribute to the stable supply of electric power in other countries through the IPP business and consulting services.

Policy of international activities

1. Utilize our business resources and bring back overseas' experience

We apply our internal resources and expertise to overseas' activities, and in return, use the experience gained abroad to strengthen our domestic business.

2. Contribute to the stable supply of electric power

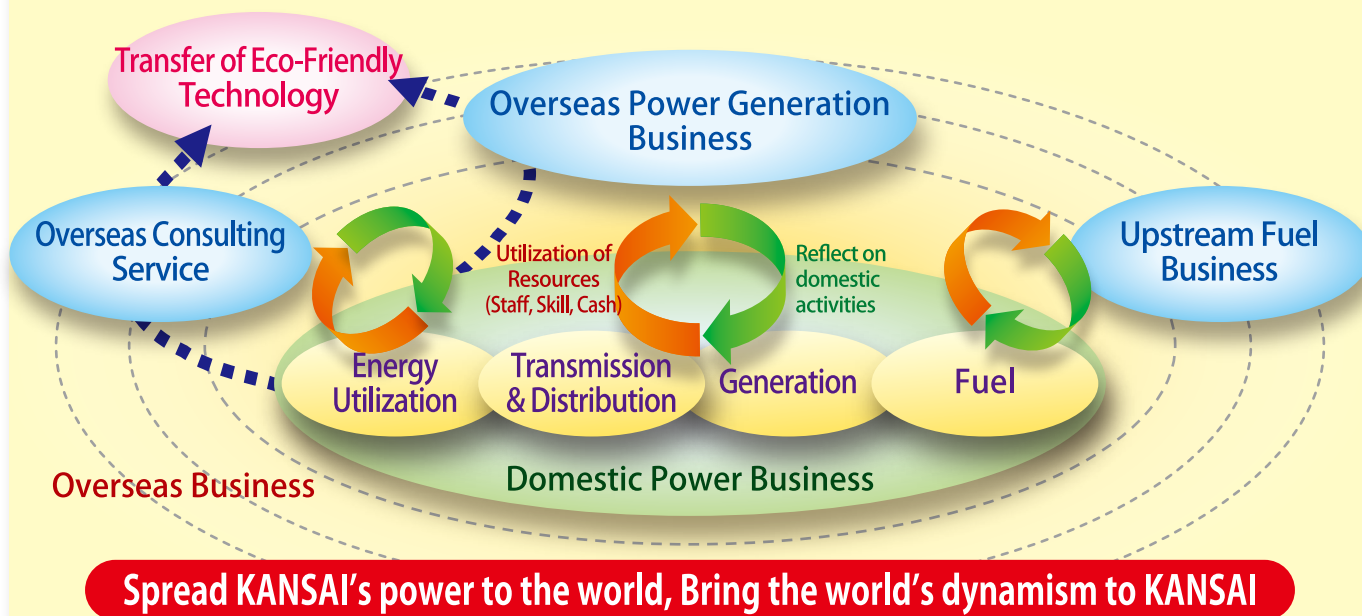
We contribute to the stable supply of electric power mainly through the IPP business. We also provide consulting services on power system engineering and efficient utilization of electricity.

Regarding nuclear power generation, we provide technical support in cooperation with the Japanese government, manufacturers and other organizations.

3. Promote eco-friendly power supply worldwide

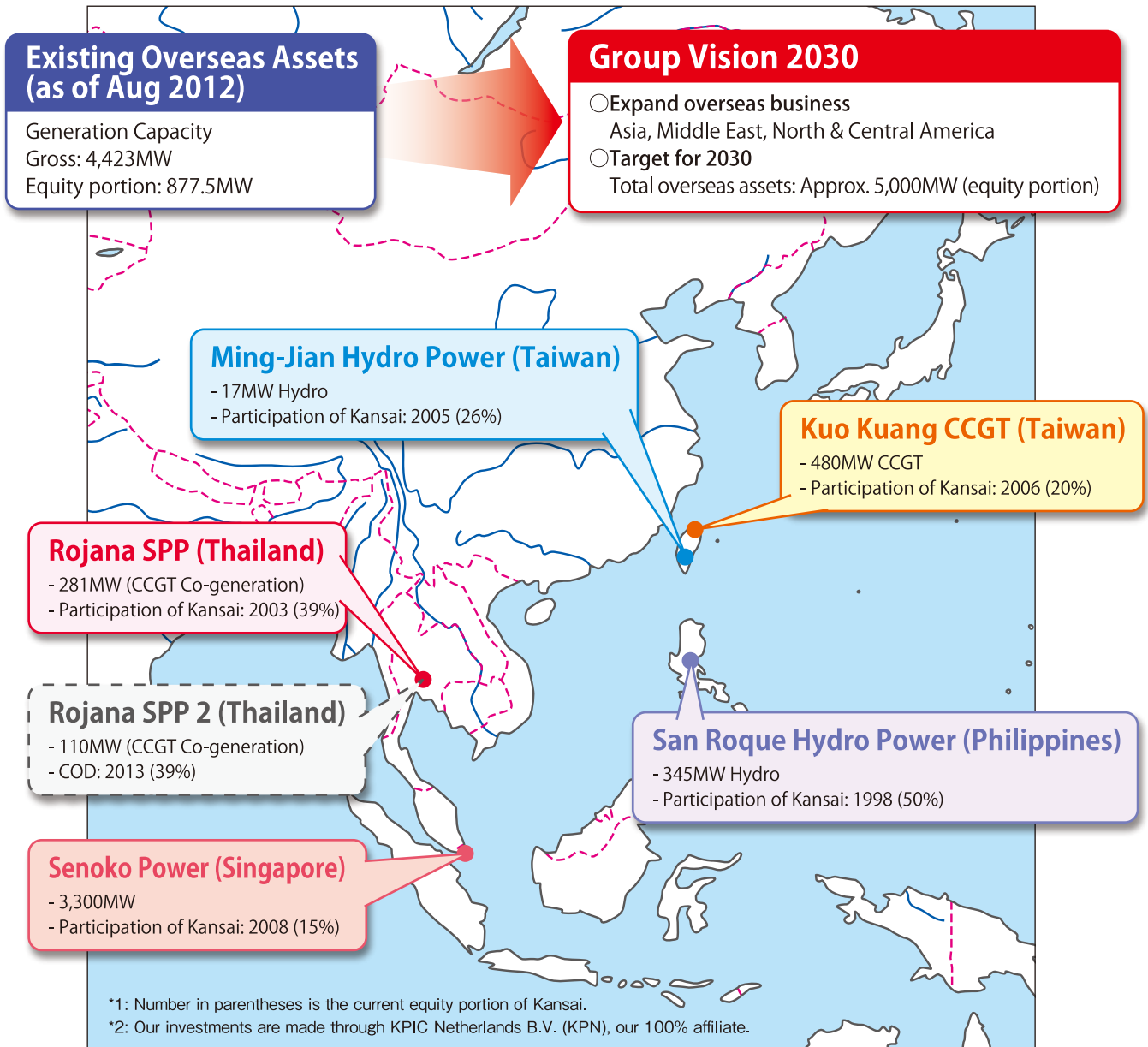
Besides transferring eco-friendly technology to developing countries, we promote renewable energy businesses and thus help to create a low-carbon society.

Through these international activities, we earn appropriate profits.



Overseas Projects

Kansai Electric started its overseas business in 1998 (San Roque Hydro Power Project in the Philippines) and has continued to expand throughout South East Asia. We will keep growing our overseas business to achieve our Group Vision 2030. In addition to investing in the Project, we will actively play a major role in financing based on our strong credit, and will technically contribute to the Project by sending our engineers during construction, operation and maintenance.



San Roque Multi-Purpose Project (Philippines)

Outline:

Multi-purpose dam (power generation, irrigation, flood control, improvement of water quality) constructed by San Roque Power Corporation and operated by National Power Corporation

Project scheme: 25 years BOT

Schedule:

Start construction:	March 1998
COD:	May 2003
Equity portion:	50%
Capacity:	345MW



Rojana SPP Project (Thailand)

Outline:

Based on SPP (Small Power Producer) program in Thailand, it provides electricity and steam with EGAT and consumers in the Industrial Park.

Schedule:

Start of operation:	May 1999
Participation of Kansai:	March 2003
Equity portion:	39%
Capacity:	281MW



Ming-Jian Hydro Power Project (Taiwan)

Outline:

- Run of river type hydropower project constructed and operated by Ming-Jiang
- Kansai purchased share from Thonjin in 2005.

Project scheme: 15 years BOT

Schedule:

Start of construction:	November 2004
Participation of Kansai:	March 2005
COD:	September 2007
Equity portion:	26%
Capacity:	17MW



Kuo Kuang CCGT Project (Taiwan)

Outline:

- CCGT Project by Kuo Kuang
- Kansai purchased 20% share from CTCL in 2006.

Project scheme: 25 years BOO

Schedule:

Start of operation:	November 2003
Participation of Kansai:	August 2006
Equity portion:	20%
Capacity:	480MW



Senoko Power Limited (Singapore)

Outline:

- Acquisition of Singapore's largest power generation company (32% of installed generation in Singapore)
- CCGT: 2,807MW, Oil and others: 493MW

Schedule:

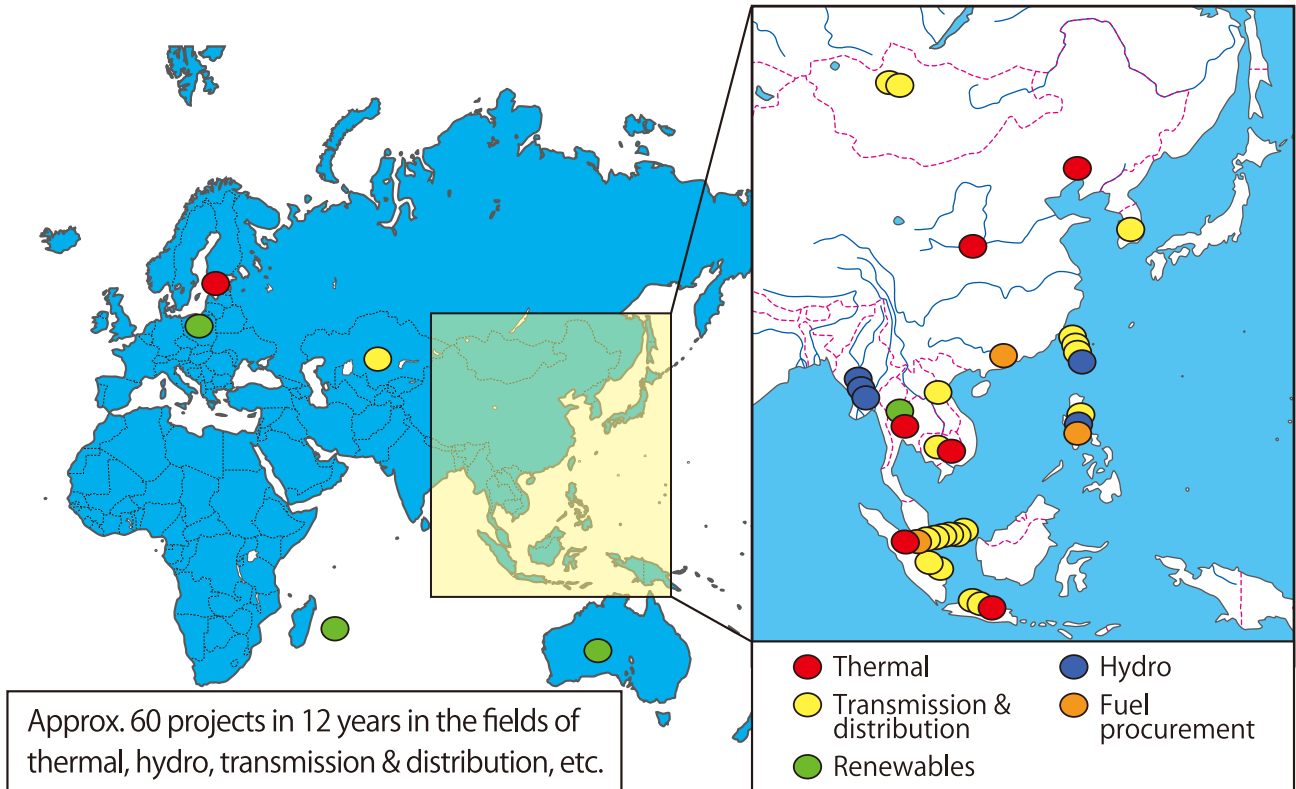
Participation of Kansai:	September 2008
Equity portion:	15%
Capacity:	3,300MW



Overseas Consulting Services

NEWJEC Inc. (Kansai Group) has been providing overseas consulting services for a long time.

Since 1996, Kansai Electric itself has been providing consulting services mainly to Asian countries to make international contributions using our domestic experience and to strengthen our skills.



International Contributions

Kansai Electric actively makes international contributions mainly through activities of "Global Sustainable Electricity Partnership".

■ What is Global Sustainable Electricity Partnership (formally "e8")?

In April 1992, the chairmen of the world's leading utilities (7 companies from 5 countries at that time) launched a non-profit organization, originally named "E7", to discuss global issues such as global warming. The organization has changed its name and membership through its 20-year history, to remain active in its current form.

Members: AEP (USA), DUKE (USA), EDF (France), Eletrobras (Brazil), ENEL (Italy), ESCOM (South Africa), Hydro Quebec (Canada), RusHydro (Russia), KANSAI (JAPAN), RWE (Germany), SGCC (China), TEPCO (JAPAN), CFE (Mexico)

■ Activities

- At the Summit every year, the chairmen of the member companies discuss how they are addressing environmental problems.
- Offering opinions at major international conferences (UN and COP).
- Promote sustainable energy development by sharing expertise with counterparts in developing countries.



Projects led by KANSAI

Bhutan Micro-Hydro (CDM)
Tuvalu solar power installations
Workshops in Pacific Islands

Bhutan Micro-Hydro project (CDM)

Rural electrification of a remote village in Bhutan by constructing a micro-hydro power station and distribution lines. To demonstrate Clean Development Mechanism (CDM) as the worldwide leading case

- 70kW Run of River type Hydropower
- Consumers: Approx. 50 households (Approx. 400 people)
- Construction: June 2004 – Aug. 2005
- CO₂ emissions reduction: approx. 500 tons-CO₂ / year (May 2005, the first Japanese power company to be registered with the UN CDM Committee)



Tuvalu Solar Power Generation Project

Tuvalu will be severely affected by the rising sea level due to global warming, etc. Kansai has built a solar power generation system and transferred the know-how necessary to build and operate the system to Tuvalu Electricity Corporation. The project was also an opportunity to introduce and promote the use of renewable energy.

- Capacity: 40kW
- Direct connection to the system (without batteries)
- Construction: Oct. 2007 - Dec. 2008

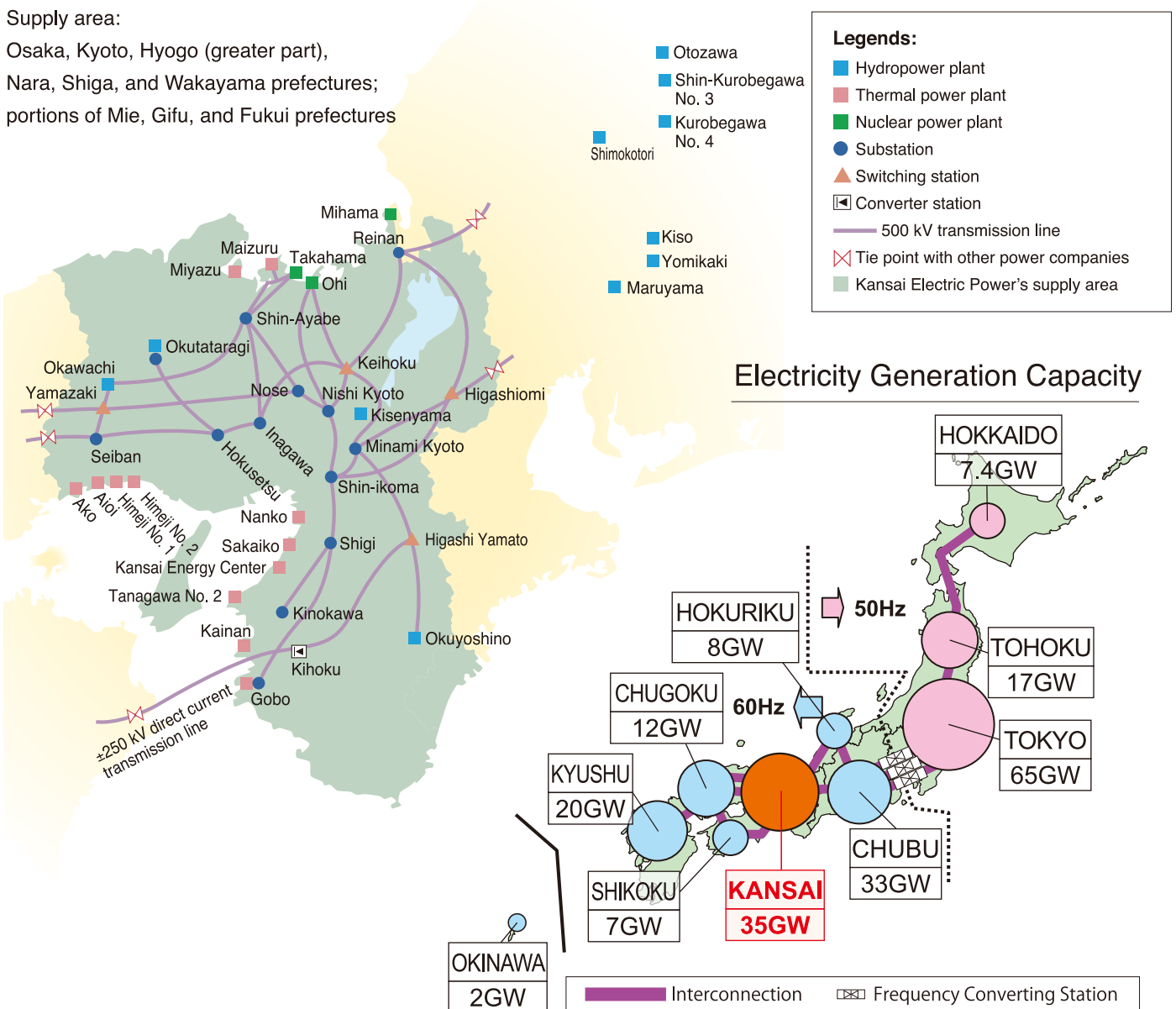


Corporate Information

System map

Supply area:

Osaka, Kyoto, Hyogo (greater part),
Nara, Shiga, and Wakayama prefectures;
portions of Mie, Gifu, and Fukui prefectures



General Information (as of March 2012)

Date of establishment : May 1, 1951
 Paid-in capital : ¥489,320 million
 Total assets : ¥6,660,484 million
 Employees : 22,376
 Energy sales : 146,028 million kWh
 System peak demand : 33,060 MW (August 2001)
 Operating revenues : ¥2,503,155 million

Electricity Supply Facilities (as of March 2012)

•Power plants		•Transmission lines (length)	
Hydro	: 8,200 MW	Overhead	: 14,101 km
Thermal	: 16,910 MW	Underground	: 4,413 km
Nuclear	: 9,770 MW	•Distribution lines (length)	
Renewable	: 10 MW	Overhead	: 123,804 km
Total	34,880 MW	Underground	: 6,245 km

The Kansai Electric Power Co., Inc. International Cooperation Group
 3-6-16, Nakanoshima, Kita-ku, Osaka 530-8270, Japan
 TEL (+81)-6-6446-3178