

# **Exchange Programs and Double Degree Programs AY2016 - 2017**

**Graduate School of Public Policy (GraSPP)  
The University of Tokyo**

## **INFORMATION SESSION**

**23rd Oct 2015**

**12:15-14:00**

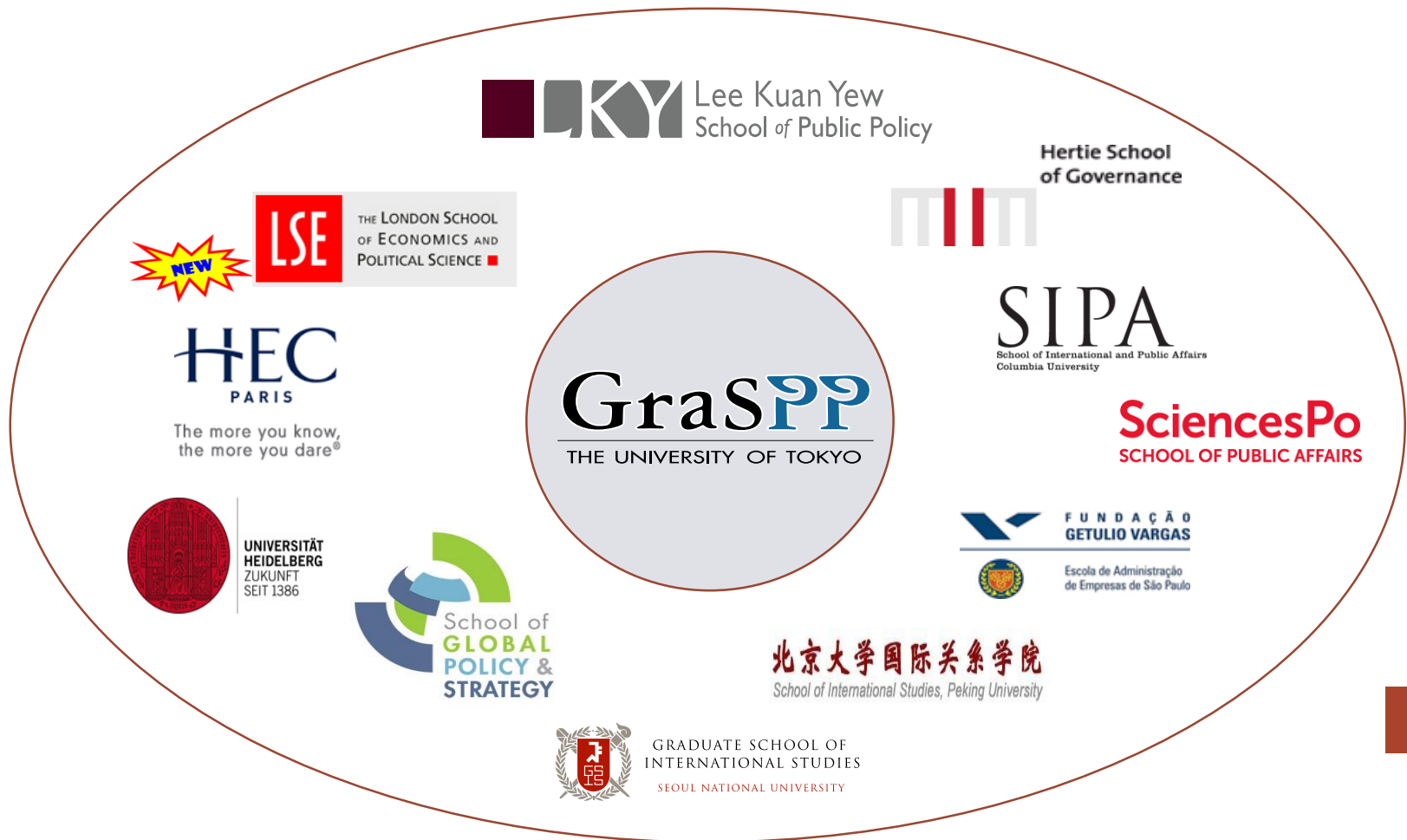
# Today's Schedule

(Subject to change)

12:15 -	Greeting Handouts check	
12:20 -	GraSPP D.D & Ex. Programs Information	Prof. Iida Prof. Nishizawa
12:55 -	Introducing Partner Schools 1. HSoG                      7. FGV 2. LSE                        8. SIPA 3. Sciences Po            9. Heidleberg 4. HEC 5. LKY 6. UCSD	Ms. Nachi, Incoming EX & DD Students, (Prof. Ueda)
13:30 -	Ex & DD Application Information	
13:45 - 14:30	Q & A	

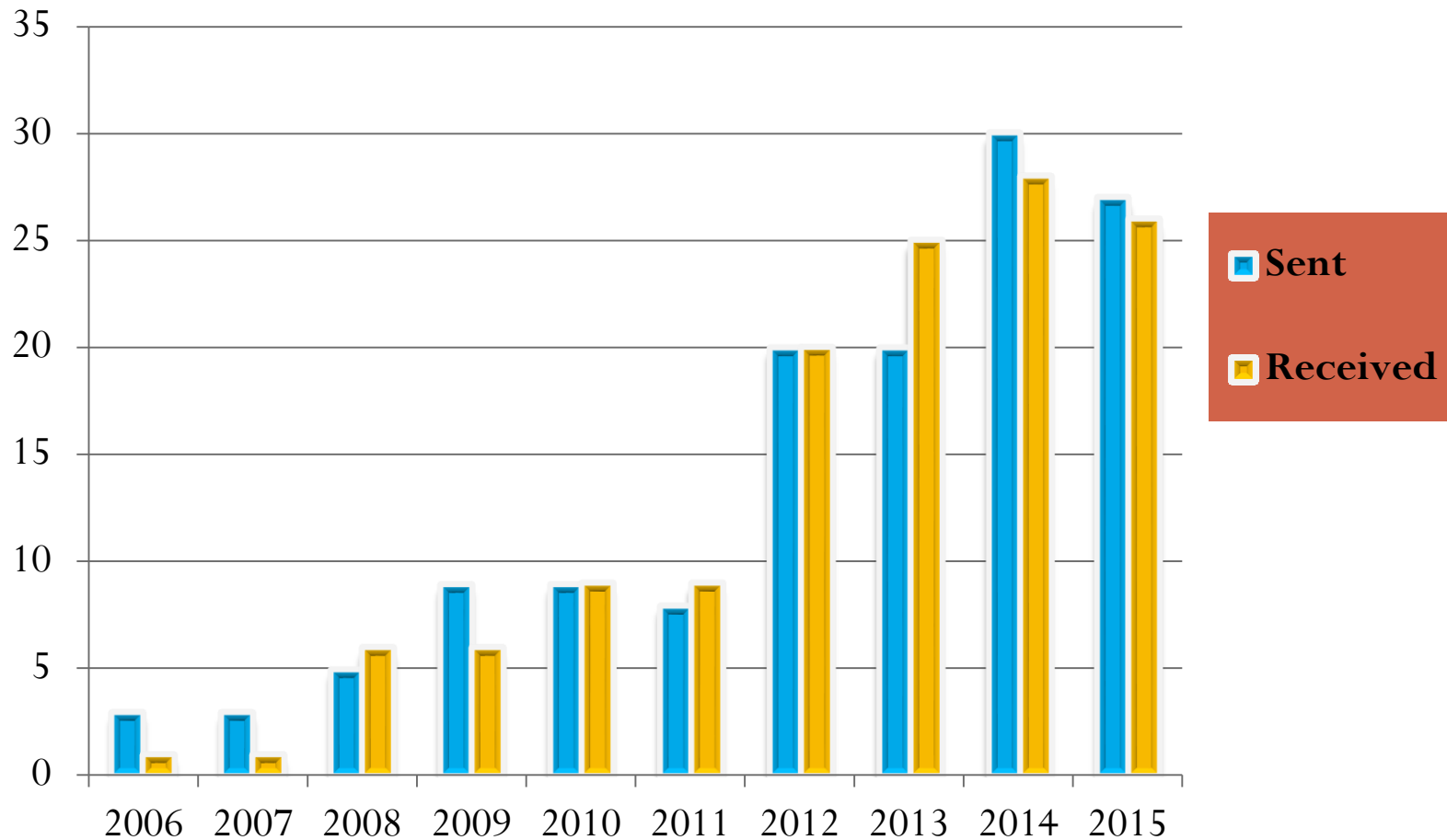
# GraSPP is the window of your worldwide campus!

## GraSPP Partner Institutions

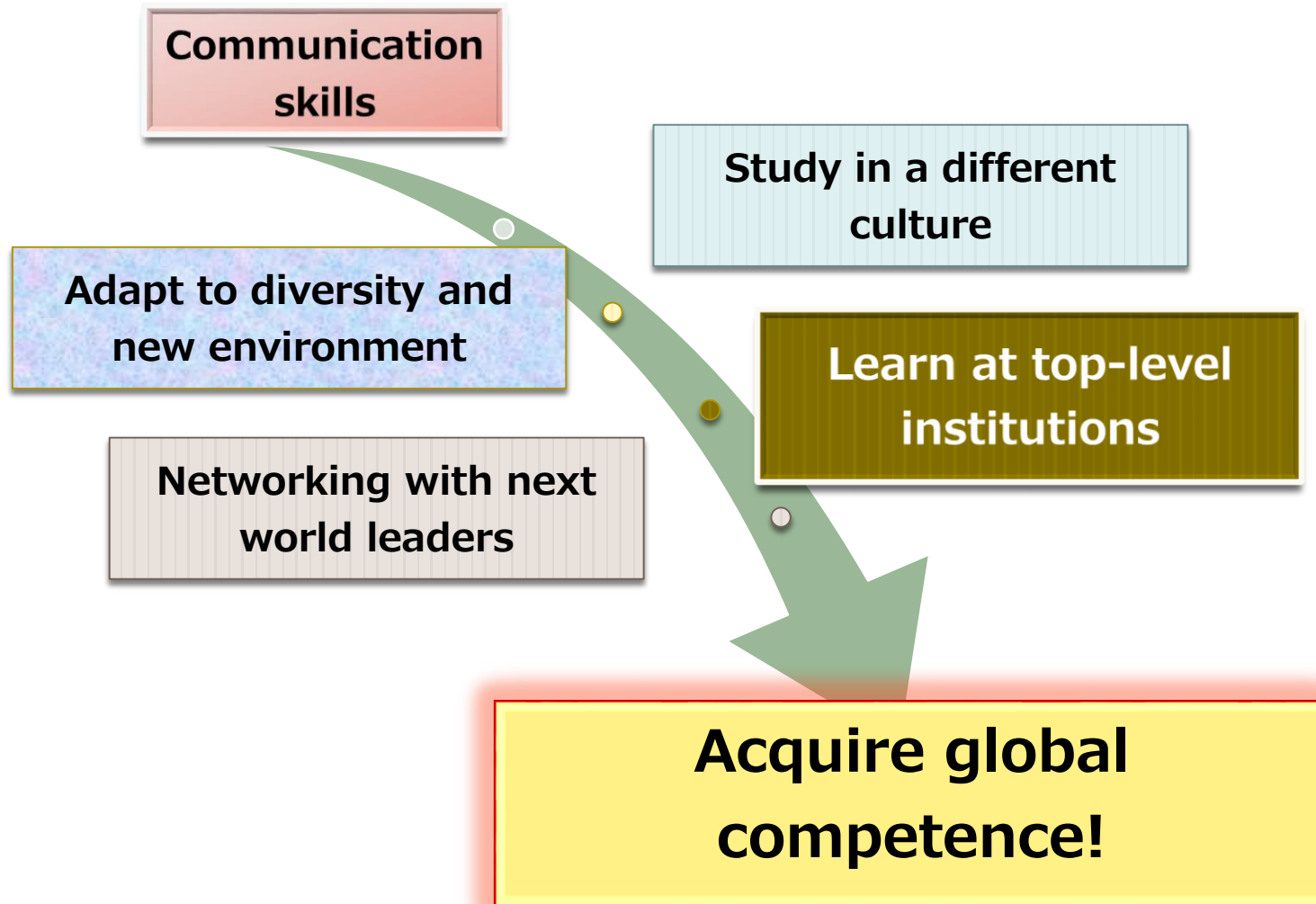


# Ex. and DD Students Mobility Year 2006 – 2015

Outgoing students 141  
Incoming students 133



# Benefits of Studying Abroad



# TOEFL Score



GraSPP expects TOEFL (iBT) score at the time of application at least as below:

	Exchange	Double Degree
GraSPP screening	85	90
Partner university screening	Each university has their own requirement regarding TOEFL score. Refer to application guidelines.	

# GraSPP Ex. and DD Partner Schools



**SciencesPo**  
SCHOOL OF PUBLIC AFFAIRS



**HEC**  
PARIS

The more you know,  
the more you dare®

**FUNDAÇÃO**  
**GETULIO VARGAS**



北京大学国际关系学院  
School of International Studies, Peking University

	Ex.	D.D
SIPA, Columbia University	N/A	○
Lee Kuan Yew School of Public Policy	○	○
Sciences Po.	○	○
Hertie School of Governance (HSoG)	○	○
University of California, San Diego (GPS, former IR/PS, - UCSD)	○	N/A
Heidelberg University	○	N/A
HEC Paris	○	N/A
Fundação Getulio Vargas (FGV) - EAESP	○	N/A
London School of Economics and Political Science(LSE)	N/A	○
GSIS, Seoul National University	TBC	TBC
SIS, Peking University	TBC	TBC

# Upcoming Exchange Programs

## Exchange and/or Double Degree Programs



Australian  
National  
University

The Australian National University (ANU)

Double Degree program with **Crawford School of Public Policy**, ANU  
College of Asia and the Pacific

Degree to be conferred: Master of Public Policy

Starting from: 2016?

Details to be arranged

<https://crawford.anu.edu.au/study/graduate-degrees/master-public-policy>

# Ex. & DD Differences at a Glance

	Exchange Programs	Double Degree Programs
Duration	2– 4 terms	One academic year (4 terms)
Status	<ul style="list-style-type: none"> <li>• Study abroad (UTokyo)</li> <li>• Non-degree audit student (host univ.)</li> </ul>	<ul style="list-style-type: none"> <li>• Study abroad (UTokyo)</li> <li>• Full time degree students (host univ.)</li> </ul>
Tuition	<ul style="list-style-type: none"> <li>• Pay at UTokyo</li> <li>• Waived at the host university</li> </ul>	<ul style="list-style-type: none"> <li>• Pay at the host university</li> <li>• Waived at UTokyo</li> </ul>
Credits	Transfer credits to GraSPP up to 23 credits	Transfer credits according to the Core mapping
Degree	MPP (GraSPP, UTokyo)	2 degrees (MPP, MPA, MIA, etc.) from 2 institutions

## Non-Degree Exchange

Financial Obligation:  
**Relatively Light**

Flexibility of Study Plan:  
**High**

1 degree  
**GraSPP MPP**

Since **2006**

## Double Degree

Financial  
Obligation:  
**Heavy**

Very Careful Study Plan is  
**Essential**

**2 Degrees** from  
**2 Universities**

Started in **2010**

(MEMO) Approx annual tuition  
LSE : €24,000  
SIPA: USD 50,000  
Sciences Po : € 22,500  
HSoG: € 15,000

# Double Degree Programs

GraSPP signed the MOU on Double Degree Program between LKYSPP in Nov. 2009. **This was the first DD agreement that the University of Tokyo has ever made.**

- Can obtain **degrees from both the UTokyo and partner university** upon satisfying the graduation requirements of both degrees.
- A system where a student **works for two different university degrees** in parallel, **completing them in less time (2 to 3 years)** than it would take to earn them separately.

## Double Degree Programs in Partner Universities Application Open for AY 2016 - 2017

Double Degree	SIPA	LKY-SPP	Sciences Po.	HSoG	LSE
Programs	MPA MIA	MPP	MPP	MPP	MPA
◆Features ☆Strong Area(s)	◆Capstone ◆Concentration ◆Specialization  ☆Economics ☆Development ☆Financial Policy and Regulation	◆Policy Analysis Exercise (PAE) ◆Program Scholarship available  ☆Regional Policy and/or Int'l relations	◆Core Courses ◆Concentration ◆Capstone ◆Personal Project  ☆Financial Policy and Regulation ☆Regional Policy and/or Int'l relations	◆Master Thesis  ☆Regional Policy and/or Int'l relations	◆Policy Stream ◆Capstone  ☆Economics

# Notes for Double Degree Program 1

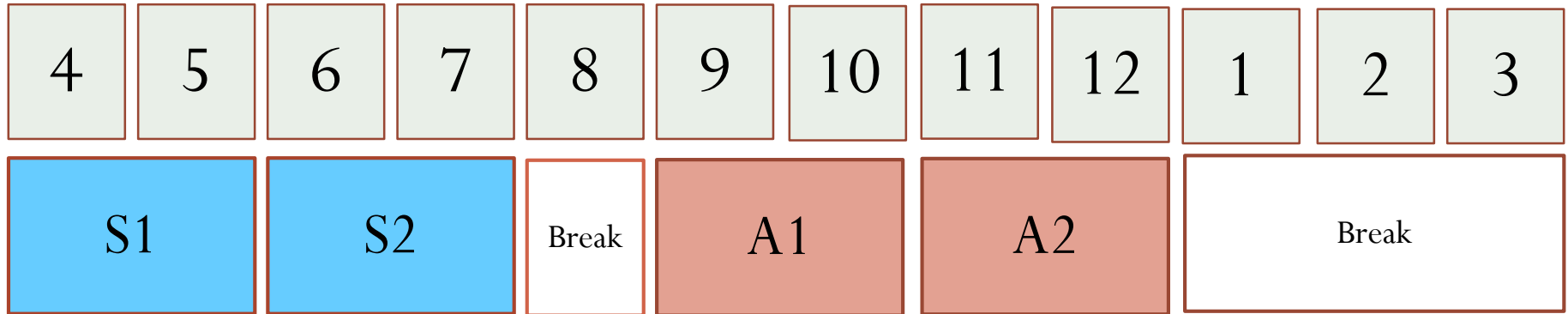
- Recommend to study at GraSPP at least 1 year before departure.
- Recommend to complete all core courses before your departure.  
⇒ HSoG and LSE require prospective DD students to attend their program with completed GraSPP core courses.

## Notes for Double Degree Program 2

- New system in Sciences Po-GraSPP DD to start in 2016
  - Sciences Po has launched **Master of Public Policy**.
  - Joint Admission: around 10 from the world for cohort 2016-2018
  - Prescreening for April enrollees
  - You must apply for Sciences Po-GraSPP DD on-line at Sciences Po's website separately by February 1st, 2016.
  - Start at Sciences Po in the 1<sup>st</sup> year, finish the 2<sup>nd</sup> year at UTokyo (for April enrollees: UTokyo-Sciences Po-UTokyo).
  - Strengthen the bond by maximizing the time together/

# University of Tokyo may change academic year schedule slightly

## Current Schedule



## 2016 Schedule

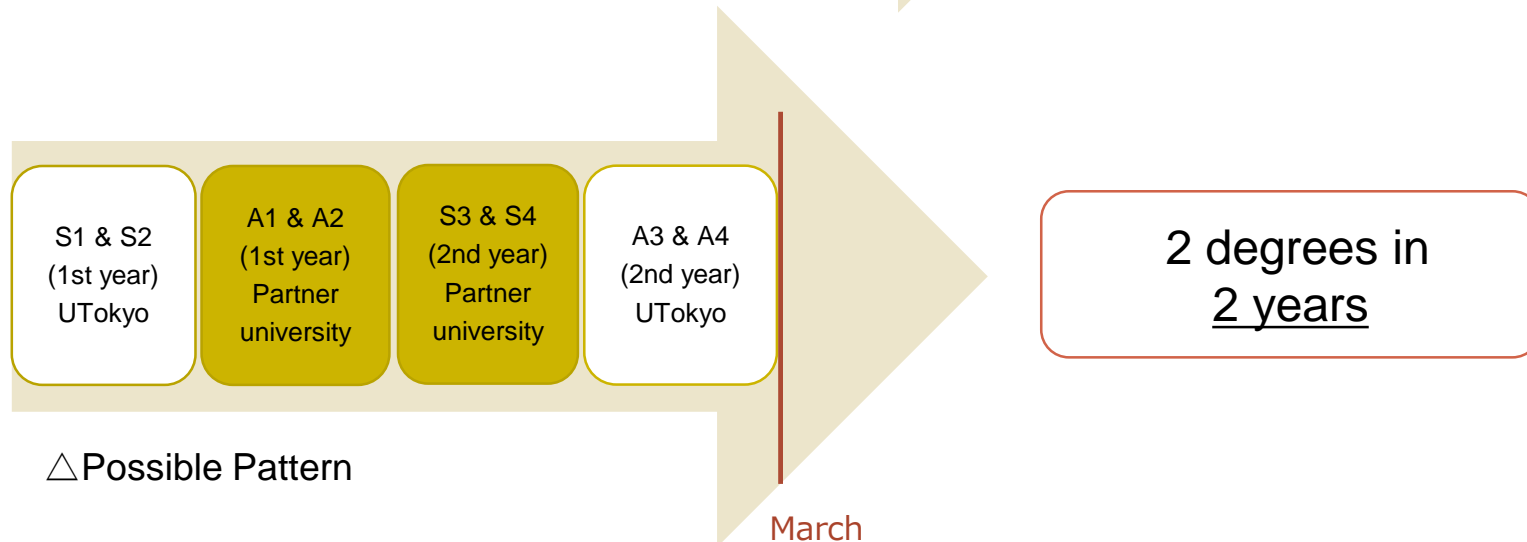
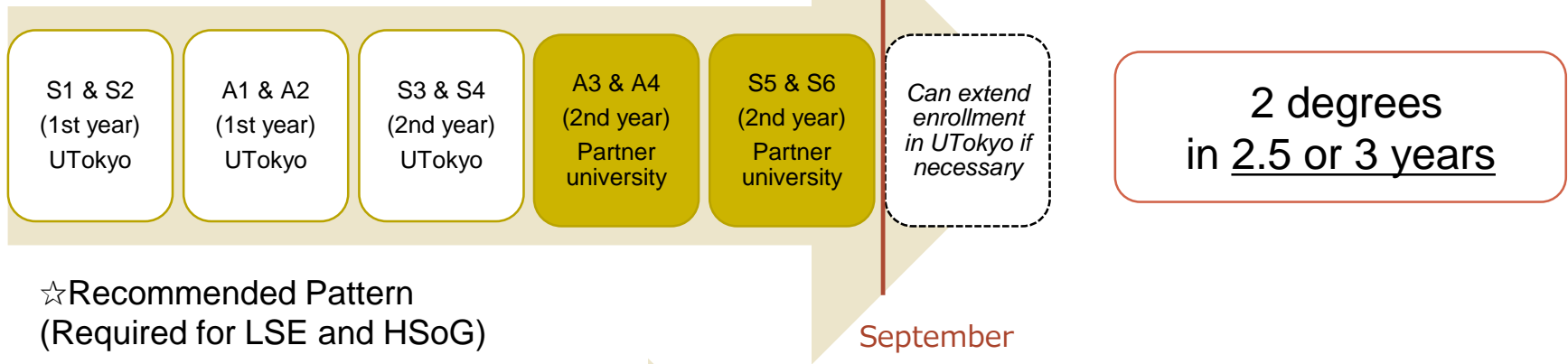


※subject to change

# Double Degree Program Schedule

## Students Enrolled in April (4月入学)

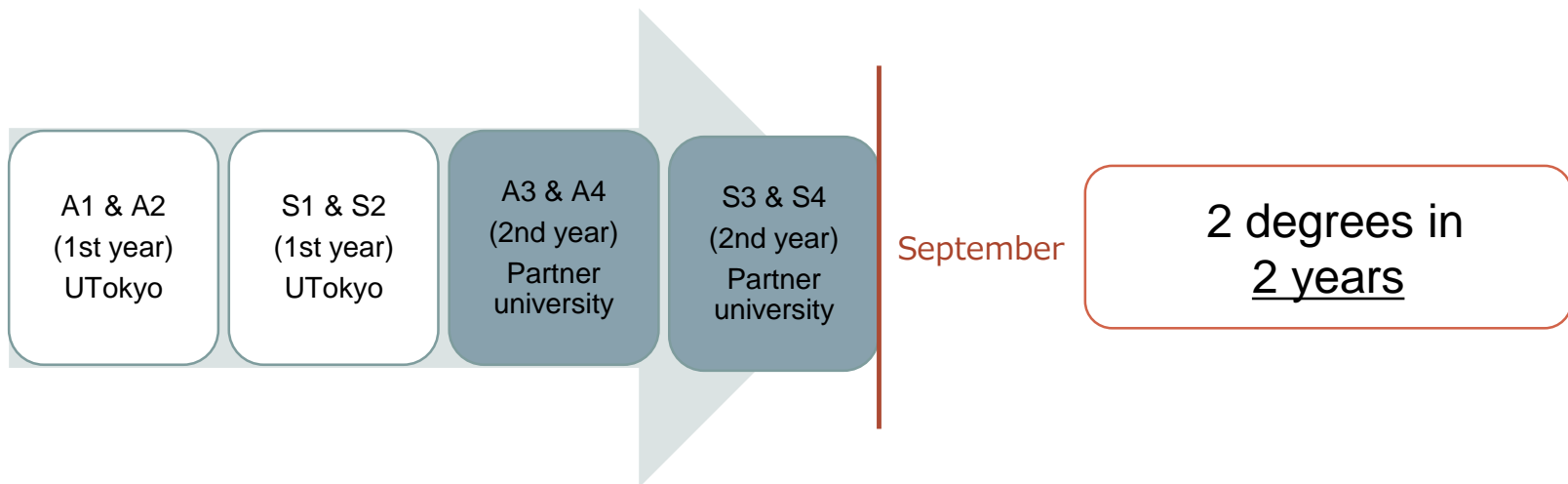
- Legal Policy Program
- Public Management Program
- International Public Policy Program
- Economic Policy Program



# Double Degree Program Schedule

## Students Enrolled in September (9月入学)

- MPP/IP Program



# Exchange Programs

An exchange program is based on the Agreement and Memorandum between GraSPP (UTokyo) and the partner universities.

## Exchange program = Non-Degree Student Exchange

What is Non-Degree Student Exchange?

1. Studying at GraSPP's partner schools that are world's top-level public policy schools.
2. Partner schools also send exchange students to GraSPP/
3. Registered Status at UTokyo will be **"Study Abroad."**
4. Period of study abroad : **2 terms or 4 terms (one academic year)**
5. **Exempted from the tuition at a visiting univ.** Pay the tuition at UTokyo.
6. **Receive credits by transferring** those you earned at the partner univ.  
Regulations apply; not all credits may be transferable.
7. **No degree** is awarded at the visiting univ.

# Exchange Programs in Partner Universities

## Application Open for AY 2016 - 2017

Exchange program	LKY-SPP	Sciences Po.	HSoG	UCSD GPS (former IR/PS)	Heidelberg Univ.	FGV EAESP	HEC Paris
Programs	Master of Public Policy (MPP)	12 Schools	Master of Public Policy (MPP)	Master of International Affairs (MIA) or Master of Public Policy (MPP)	Graduate Programme for Transcultural Studies (GPTS)	Master in International Management (MPGI)	Int'l Exchange Non Degree Programs

# Characteristics, Strength(s)/Weakness(es) of Each Exchange Programs

Exchange program	LKY-SPP	Sciences Po.	HSoG	UCSD GPS (former IR/PS)	Heidelberg Univ.	FGV EAESP	HEC Paris
<p>▲ Characteristics</p> <p>☆ Strengths</p> <p>↑ Weakness</p>	<p>► Very diverse with large Asian population</p> <p>► Many students with professional experiences</p> <p>► Lots of group work, case-study and/or discussion</p> <p>☆ East Asia or regional policy focused</p> <p>☆ Various courses to choose from</p>	<p>► Many students with professional experiences</p> <p>► Condensed coursework</p> <p>☆ Focus on int'l relations, financial policy and regulation</p> <p>☆ Free to choose a school to belong to</p> <p>☆ Has enriched foreign language courses</p>	<p>► Interdisciplinary, policy-oriented approach</p> <p>► Unique policy courses w/ seminar and fieldwork</p> <p>☆ Focus on regional policy and/or int'l relations</p> <p>☆ Small but diverse student body</p> <p>☆ English instruction</p>	<p>► Solution driven, Pacific focused, global results</p> <p>► Intensive coursework w/ lots of assignments</p> <p>► Research and/or case-study based</p> <p>☆ Can acquire wide range of economic knowledge</p> <p>☆ Can focus on research and development</p> <p>☆ Homey environment</p>	<p>► Transcultural studies approach</p> <p>► Lecture and/or seminar based</p> <p>☆ Focus on regional policy and/or int'l relations</p> <p>☆ Homey environment w/ small student body</p> <p>➡ Limited courses taught in English</p>	<p>► Business-oriented school</p> <p>► Lecture, seminar, and case-study based</p> <p>☆ Links to the int'l business world</p> <p>☆ Can focus on policy development</p> <p>☆ Facilitate regional interests</p> <p>➡ Limited courses taught in English</p>	<p>► Business-oriented school</p> <p>► Homey environment with diverse student body</p> <p>☆ Cross-cultural and international approach</p> <p>☆ Various courses to choose from</p> <p>☆ Close links to the international business world</p>

# Last but not Least....

## **GraSPP is....**

- 105 out of 271 are non-Japanese
- Most diversified graduate school in UTokyo
- Reinforcing **internationalization** efforts
- Offering opportunities to gain solid expertise and int'l skills to become active in the field of public policy

## **Globalization** means...

- Job opportunities are extensive in global market!
- Needs to compete against others from all over the world
- Having knowledge, experiences and communication skills in English

## **The purpose of Exchange Study** is...

- To learn at top-level institutions, different environments that are not offered at UTokyo
- To broadening your network with future leaders in world

**Be prepared, grasp opportunities  
and invest in yourself!**

# Information Session for LSE Dual Degree Program

by Babajanian, Babken Ph.D, MPA Programme Tutor



- When: **Thu 5 November, 2015**  
at 12:30-13:30
- Where: **Room 710**, the Administrative Bureau #2 Bld
- Participants: Current and prospective GraSPP students who are interested in D. D program with LSE



# School of International and Public Affairs

## Columbia University

[http://issuu.com/columbiauniversitiesipa/docs/sipa\\_mia - mpa brochure](http://issuu.com/columbiauniversitiesipa/docs/sipa_mia_-_mpa_brochure)