

Exchange Programs and Double Degree Programs AY2018 - 2019

**Graduate School of Public Policy (GraSPP)
The University of Tokyo**

INFORMATION SESSION

13th Oct 2017

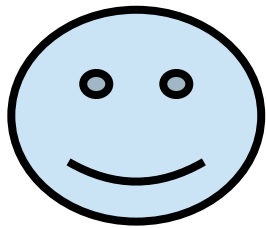
12:15-14:30

Overview

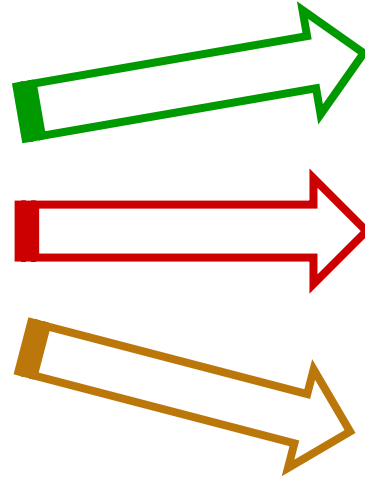
What are your long-term career goals?

- A senior official at a key ministry?
- A career diplomat?
- A global corporate leader?
- A financial elite at a world-top financial center?
- A professional at an international organization?
- Work at a world-class consulting firm?
- Start your own venture?
- Do research and teach at a world-renowned university?

Overview (continued)



???



- ❑ You might have a few thoughts, not just one, at this stage.
- ❑ It's worth asking yourself what your long-term career goals would be.

Overview (continued)

How could you achieve your future career goals successfully?

- ❑ It depends upon your carefully-prepared career strategy and determination to grasp opportunities.
- ❑ In this context, I would urge you to make the good use of the double-degree and exchange programs available to you at GraSPP.

Overview (continued)

What are the benefits?

- ❑ You could learn
 - how to survive global competition;
 - how to understand others better;
 - how to express yourself effectively; and
 - how to think freely and deeply.
- ❑ You could expand your comfort zone and gain more opportunities through extensive networks.

Overview (continued)

Where could you start to prepare an effective career strategy?

- ❑ As a first step, plan ahead over your two-year (more or less) timeframe at GraSPP.
- ❑ You should have a well-thought-out course taking plan.
- ❑ Be active, on- and off-campus, to broaden your horizons.

Overview (continued)

Once more, please be reminded that your successful future career depends upon your carefully-prepared strategy and determination to grasp opportunities, and make the good use of the double-degree and exchange programs.

Ex. & DD Differences at a Glance

| | Exchange Programs | Double Degree Programs |
|----------|--|--|
| Duration | 2– 4 terms | One academic year (4 terms) |
| Status | <ul style="list-style-type: none"> •Study abroad (UTokyo) •Non-degree audit student (host univ.) | <ul style="list-style-type: none"> •Study abroad (UTokyo) •Full time degree students (host univ.) |
| Tuition | <ul style="list-style-type: none"> •Pay at UTokyo •Waived at the host university | <ul style="list-style-type: none"> •Pay at the host university Approx annual tuition LSE : €24,000 SIPA: USD 53,000 Sciences Po : € 14,000 HSoG: € 16,000 •Waived at UTokyo |
| Credits | Transfer credits to GraSPP up to 23 credits | Credits accredited according to the core mapping |
| Degree | MPP (GraSPP, UTokyo) | 2 degrees (MPP, MPA, MIA, etc.) from 2 institutions |

Exchange Programs in Partner Universities

Application Open for AY 2018 - 2019

| Partner Univ. | LKY-SPP | HSoG | UCSD GPS | FGV EAESP | Heidelberg Univ. | Sciences Po. | HEC Paris |
|---|--|---|--|---|---|--|------------------------------------|
| Programs | Master of Public Policy (MPP) | Master of Public Policy (MPP) | Master of International Affairs (MIA) | Master in Int'l Mgt. (MPGI) | Graduate Programme for Transcultural Studies (GPTS) | 12 Schools | Int'l Exchange Non Degree Programs |
| Quota | Up to 2 in general | | | | | | |
| Exchange Period | Fall Semester only | | Fall quarter or Fall & Winter quarters | Winter break or Summer break | Fall semester or Fall & Spring semesters | | |
| ★ Requirements ◎ Recommendations † Benefits | ★ Basic micro course taken ◎ TOEFL iBT ≥ 93 ◎ Professional experiences | ★ TOEFL iBT ≥ 96 ★ GraSPP core courses (micro, macro, stats) taken ◎ Professional experiences | ◎ TOEFL iBT ≥ 100 | ★ Completing S semester in July or A semester in January ➡ Portugal language skills | ➡ German language skills | ◎ Professional experiences ➡ French language skills | ◎ Professional experiences |



Australian
National
University

【Programs】

MPA - Master of Public Administration

MPP - Master of Public Policy

【Quota】

1~2 in general

【Application Requirements】

- ▶ MPP/IP Students
- ▶ IELTS 6.5 (≥6.0 in each section) or TOEFL iBT 90
- ▶ Work experiences: ≥3-year in public sector (or related environment)
for MPP or various kinds for MPA
- ▶ To arrive on campus by 19 July at the latest

【Other Info】

- Tuition & Fees only payable to UTokyo
- On campus & Off campus Residences available
- Graduation Certificate of undergraduate school required upon ANU's application

<https://www.youtube.com/user/ANUexperience>



【Program】

MPA - Master of Public Administration

【Quota】

1~2 in general, usually 1

【Application Requirements】

- ▶ MPP/IP Students
- ▶ IELTS 7.0 (≥ 6.0 in each section)
or TOEFL iBT 107 (≥ 21 in WR and ≥ 20 in other areas)
- ▶ All core courses required by MPP/IP and at least 24 credits, including 4 Case Studies credits, completed by end of 1st year

【Other Info】

- Residence halls available
- Some financial aids available

<http://www.lse.ac.uk/study/meetLSE/wouldYouSucceedAtLSEVideo.aspx>



Hertie School of Governance



【Program】

MPP - Master of Public Policy

【Quota】

1~2 in general

【Application Requirements】

- ▶ At least TOEFL iBT 100
- ▶ 1st year core courses required by GraSPP completed

【Other Info】

- MPP/IP students are preferred
- No dormitory available

<https://www.youtube.com/user/hertieschoolberlin/>

【Program】

MPP - Master of Public Policy

【Quota】

1~2 in general; usually 1

【Application Requirement】

▶ At least TOEFL iBT 100

【Other Info】

- Completed Intro Macro, Micro, & Stats courses desirable
- Professional experiences are preferred
- Possible interview for LKY's scholarship upon LKY application
- Dormitory is on lottery

<https://www.youtube.com/watch?v=tILxws77oR8>



COLUMBIA | SIPA

School of International and Public Affairs

【Programs】

MPA - Master of Public Administration

MIA - Master of International Affairs

【Quota】

up to 2 in general

【Application Requirements】

- ▶ At least TOEFL iBT 100; GRE score is also required
- ▶ Intro Macro & Micro courses completed

【Other Info】

- Professional experiences are preferred
- Essay and Financial statement required upon SIPA's application
- On campus & off campus housing available

<https://sipa.columbia.edu/experience-sipa>

【Program】

MPP - Master of Public Policy

【Quota】

3~5 desirable

*Total of 10 candidates are aimed to be gathered from all over the world by **joint admission between Sciences Po and GraSPP**.

- Joint Admission
- 1st year at Sciences Po
 - Core Courses
 - Concentration
 - Personal Project

【Application Requirements】

- April 2018 Enrollees or Prospective candidates of MPP/IP Students
- IELTS 7.0 (≥6.5 in each section) or TOEFL iBT 100

【Other Info】

- Basic knowledge of economics and stats recommended
- No dormitory available; off campus residence available
- Directly apply online by deadline (No internal selection to be held!)

<http://www.sciencespo.fr/public/en>