

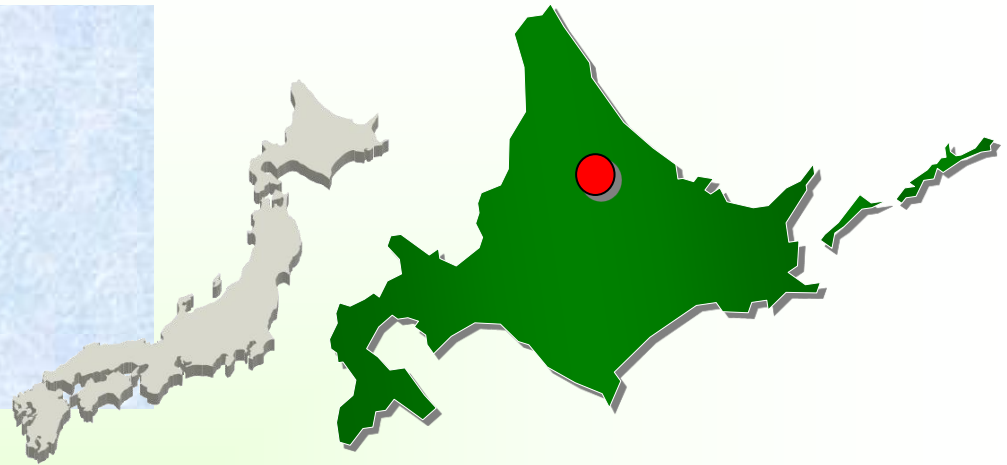
Forest FutureCity SHIMOKAWA



KOHEI NAKANO
Shimokawa Town Office

Profile

Town area : 64,420 ha
Forested area : 56,977 ha (88%)
Population : 3,645 (as of Jan. 2012)
Temperature : -30°C ~ 30°C
Priority : forestry, biomass



1st “Create employment and economical base”

Acquirement of municipal forest

Cyclical forest management

Total timber processing



2nd “Create economical circulation”

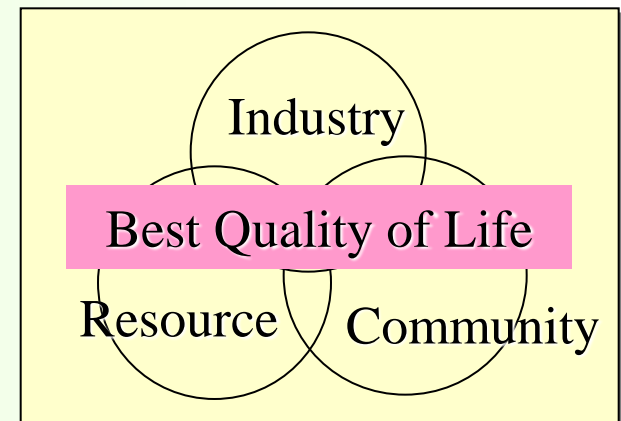
Woody biomass boilers

Biomass fuel manufacture



3rd “Go for Forest FutureCity”

Self-sustained development plan



Cyclical Forest Management

Cyclical Forest Management

- create forest resource continuously
- create employment continuously

1. Keep reforesting same area which harvested

2. Acquire forest area : annual harvest area (ha/yr) \times foster time (yrs)



Harvest



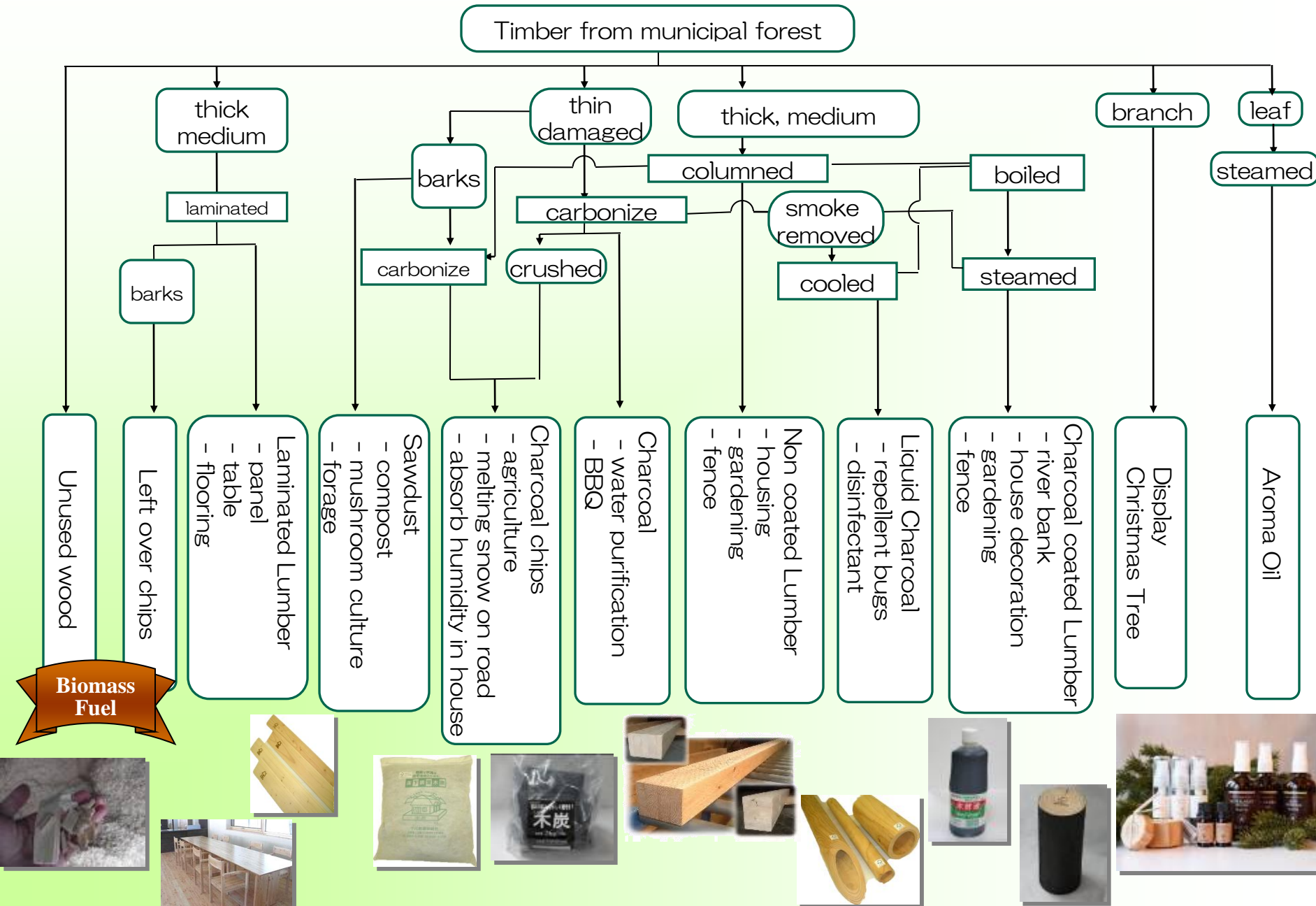
Reforest
Plant



Foster



Total Timber Processing



Biomass Fuel



Woody Biomass Energy



**Woody biomass boilers
for public centers (since 2004)**



Wood biomass fuel



**Utilization of unused wood such as leftovers in forests
Manufacture of woody biomass fuel**



**District heat supply
powered by one woody
biomass boiler (2010)**



**New business
Add income for forest**



Partner businesses

- **more trees** (Ryuichi Sakamoto)
- **JCB** (credit card)
- **ANA** (All Nippon Airways)
- **NPB** (professional baseball)
- **Sapporo Breweries** (beer)

Partnership agreements

Sponsorship funds

J-VER



Project implementation

Project management

Certification
CO2 credits

Target project types of
Japan Verified Emission
Reduction (J-VER) Scheme

- forest management
- use of woody biomass

4REST

(4 Forest Resource for Energy Sustainable Towns)
Cooperative organization among 4 towns;
Ashoro, Bihoro, Shimokawa, Takinoue

4REST J-VER 2008-2011

Forest Sink : 9,828t-CO2

Emission Reduction : 737t-CO2

Sold : 3,401 t-CO2

Income from J-VER : 1.1 milion \$ (1\$ = 80 yen)



Eco-Model City *Low-carbon model society in symbiosis with northern forest*

Shimokawa was selected as one of the Eco Model City (total 13 cities) in 2008.

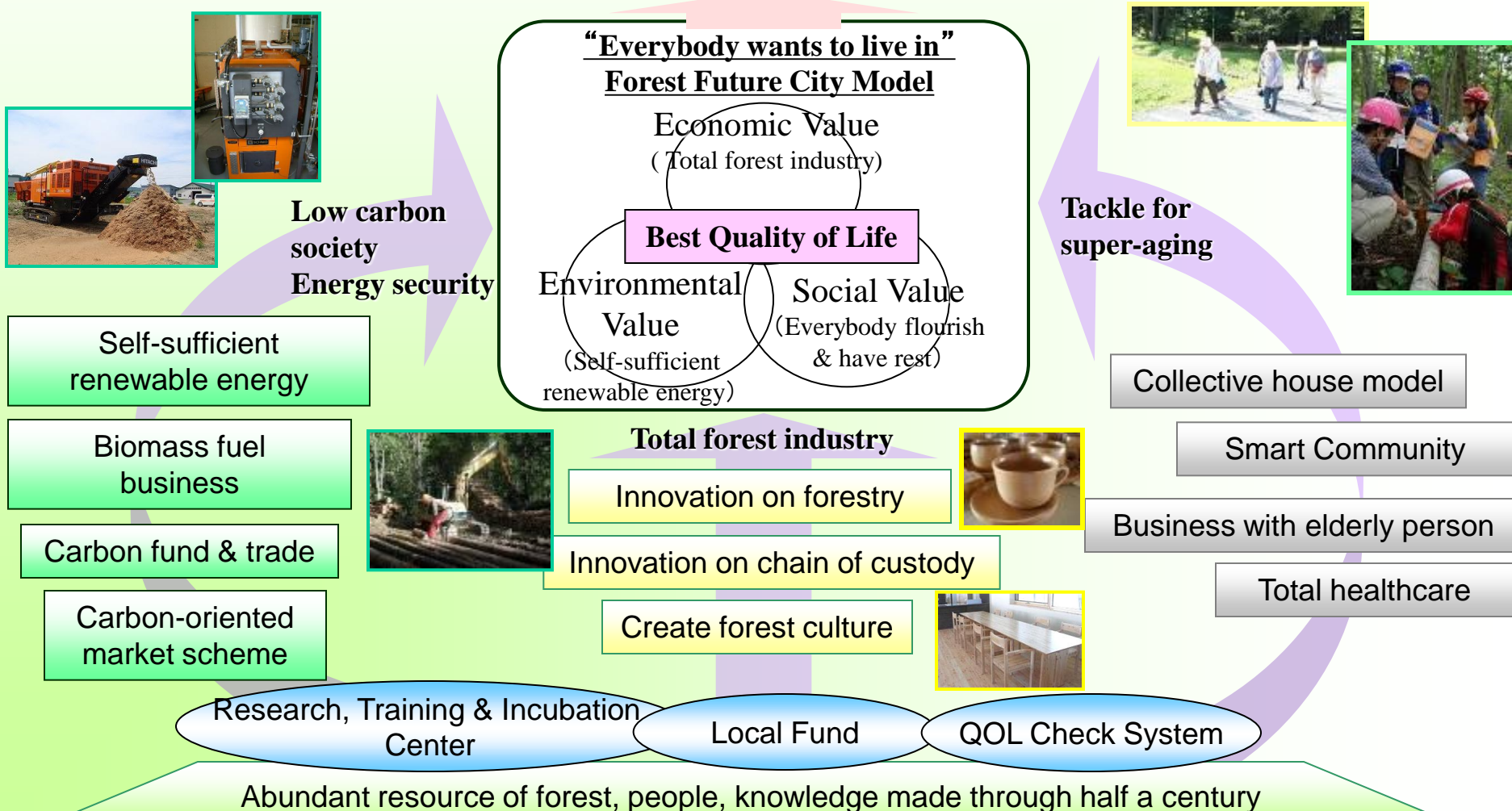


Forest FutureCity SHIMOKAWA

Necessary to solve present big issues in Shimokawa and create “Everybody wants to live in”

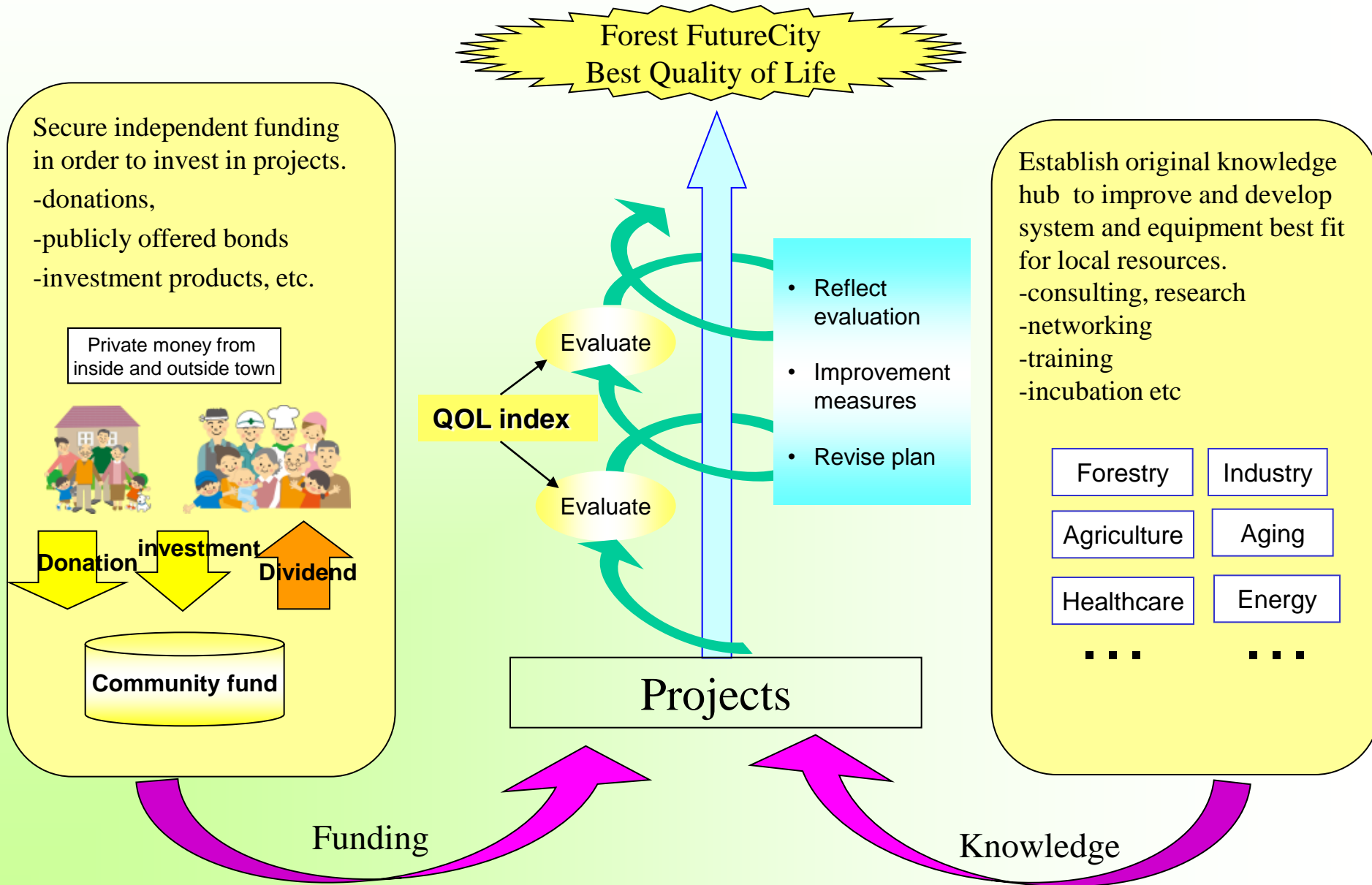
- declining population and birthrate (-90 people/yr)
- Super aging (aging rate 37.2% as of 2012)
- Energy security

Export town management package for Asian local community



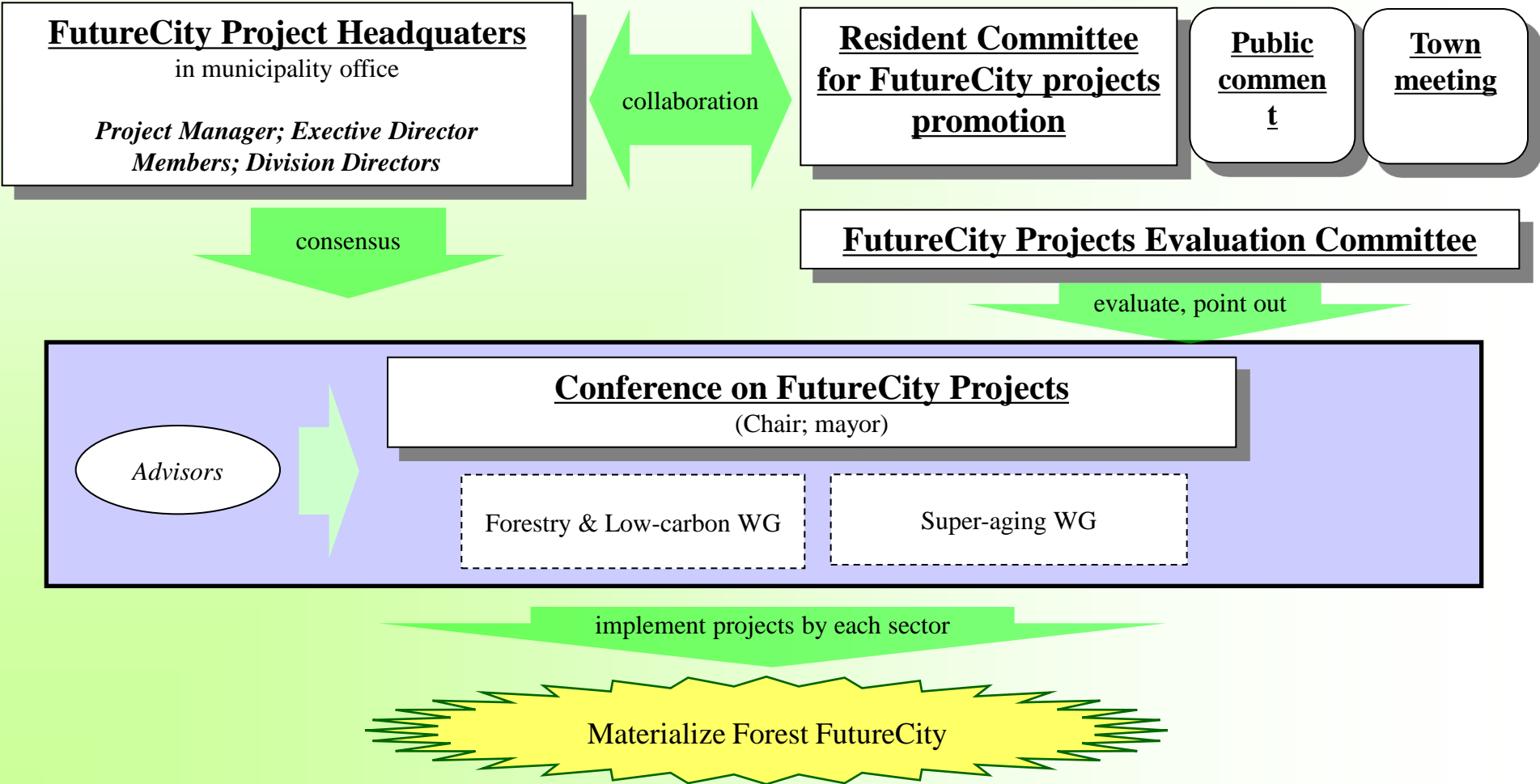
Foundation for constant value creation

Key factors for self standing of local government; Funding, Knowledge, Governance

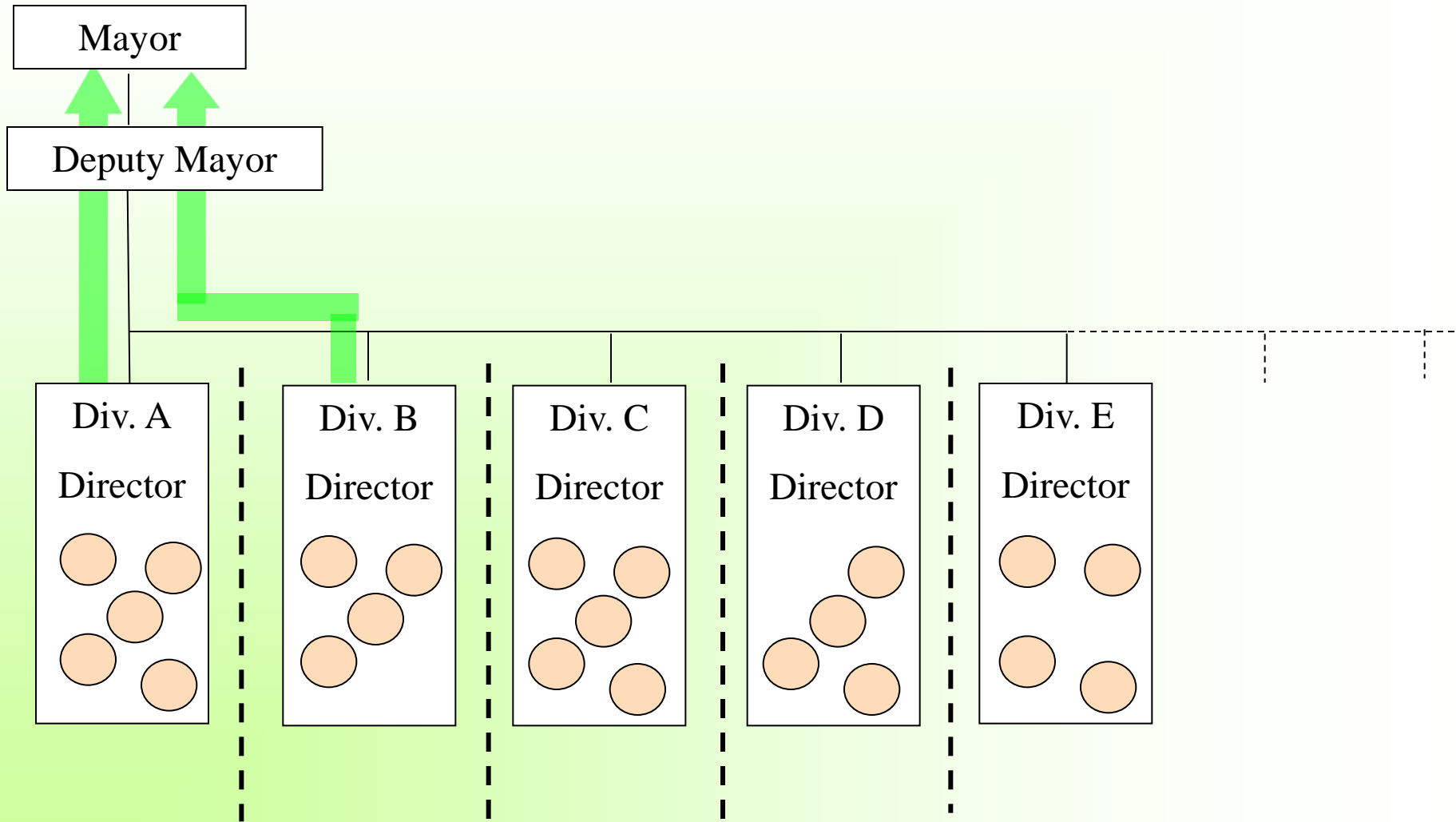


Driving Force on FutureCity projects

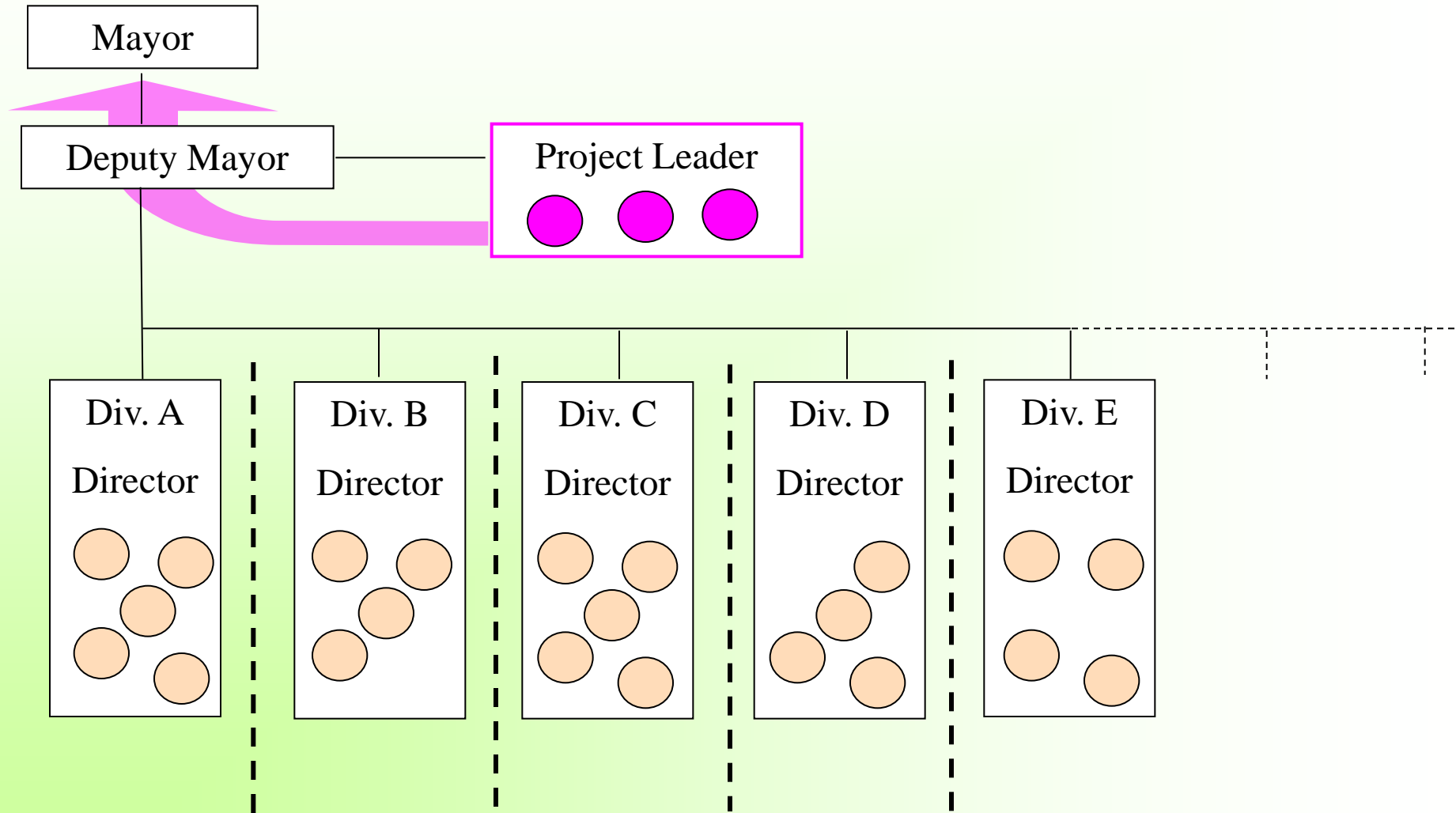
- Powerful and speedy promotion brings new model.
- Consensus and collaboration with residents bring sustainable effort.



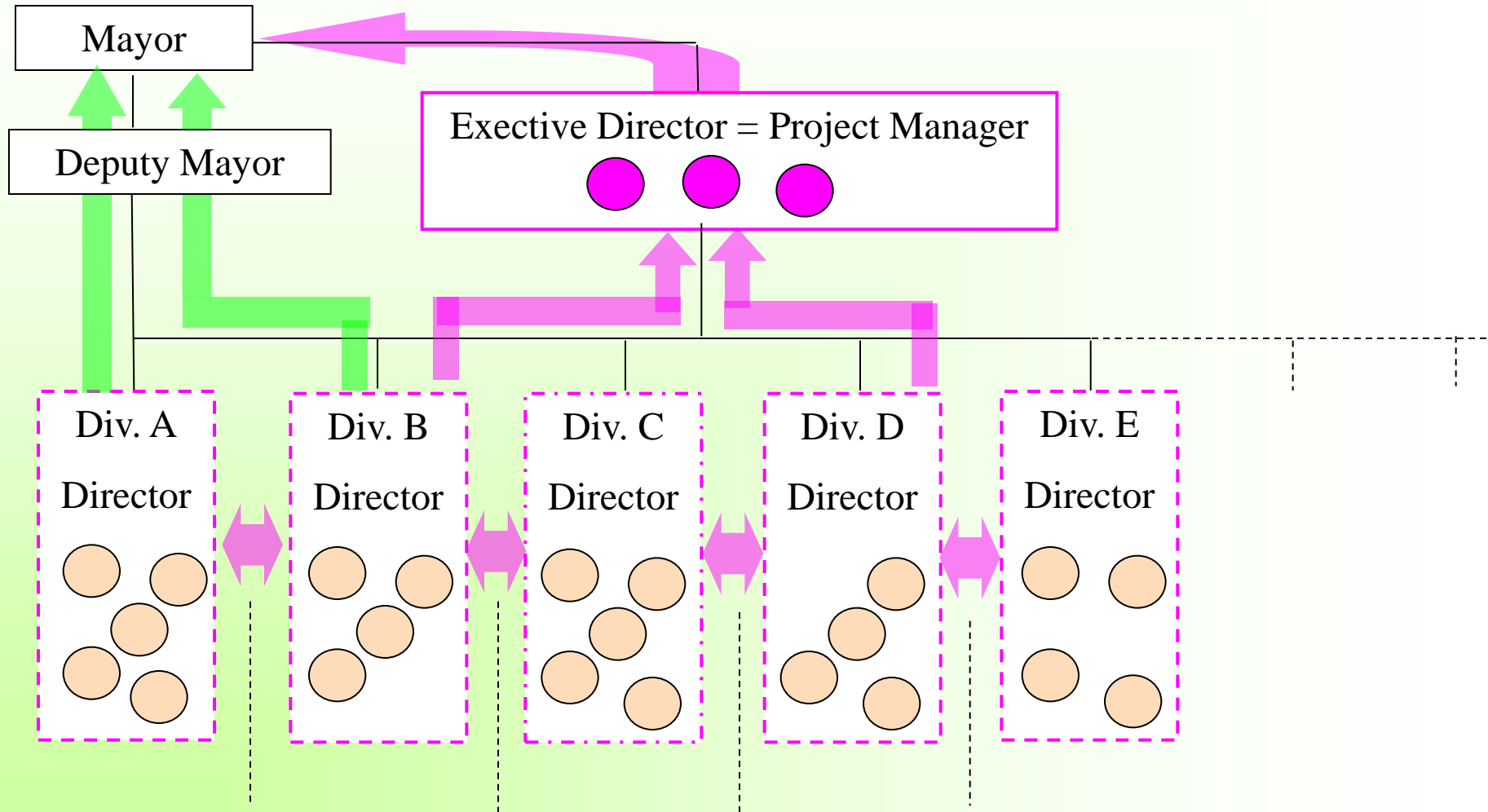
municipal office (usual)



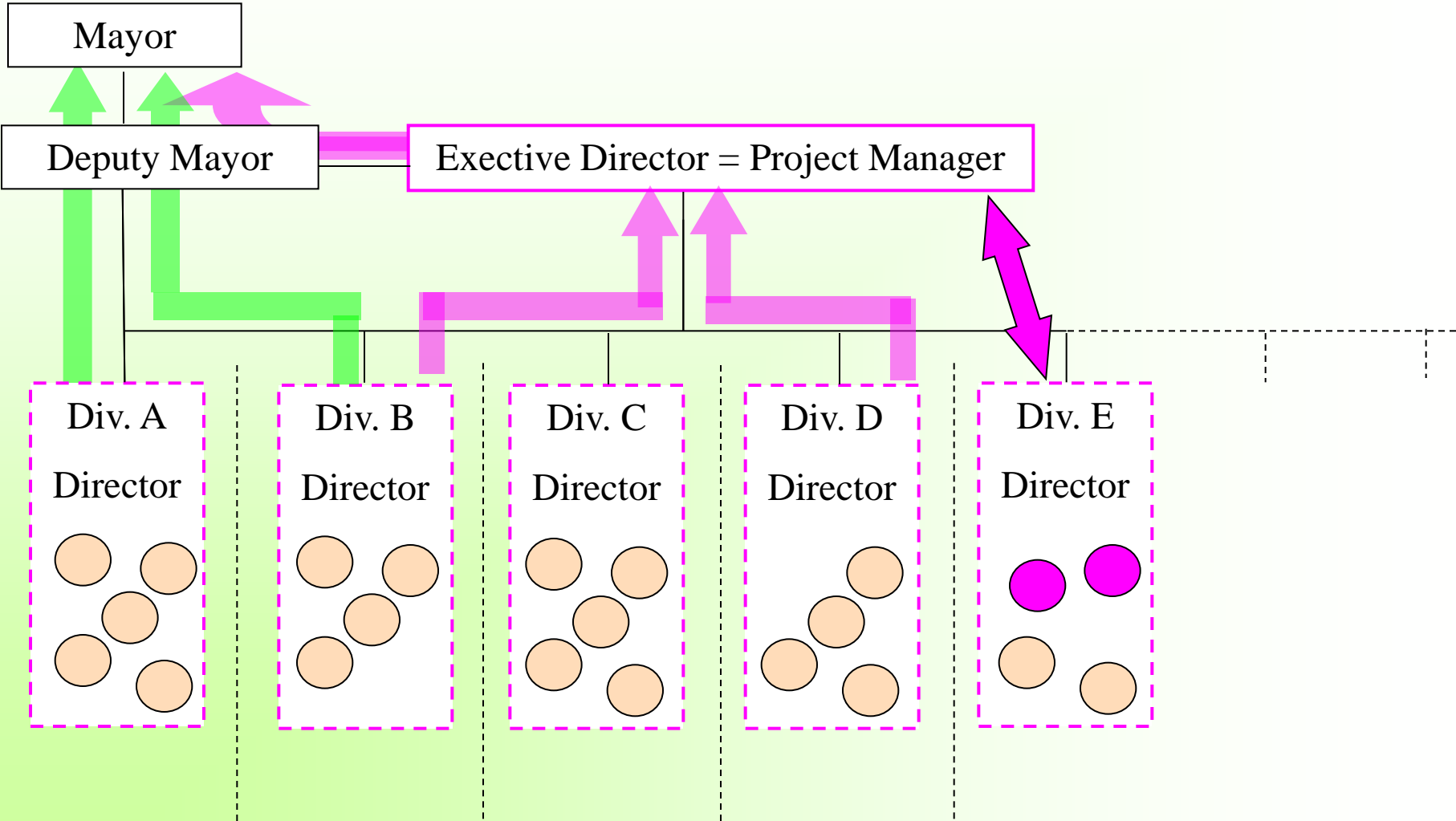
municipal office (new project)



municipal office (FutureCity project: ideal)



FutureCity Project Headquarters (now)



Future is in Forest.

