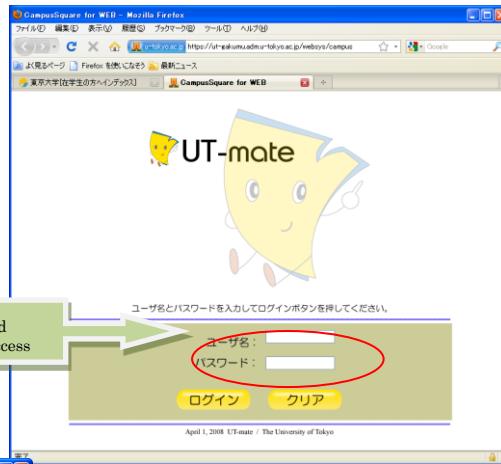


◆ Web Application for University-wide Education Programs using UT-mate

[Step.1]

Log into UT-mate

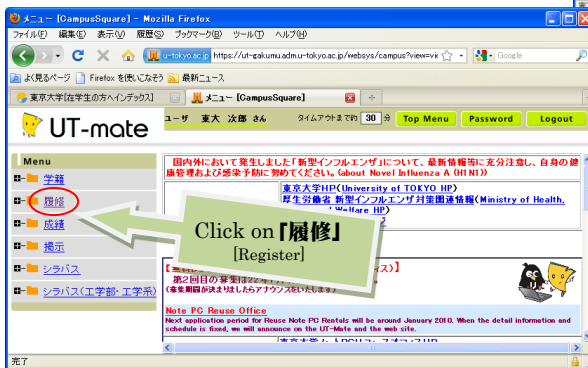
Type in user ID and password to gain access



[Step. 2]

「履修」 [Register]

「横断型プログラム修了証申請」
[University-wide Education Program]



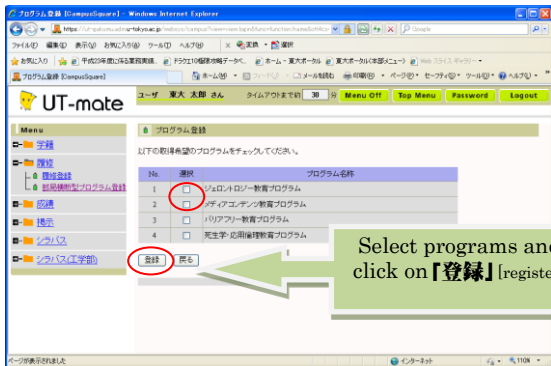
[Step. 3]

「新規登録」 [New Registration]

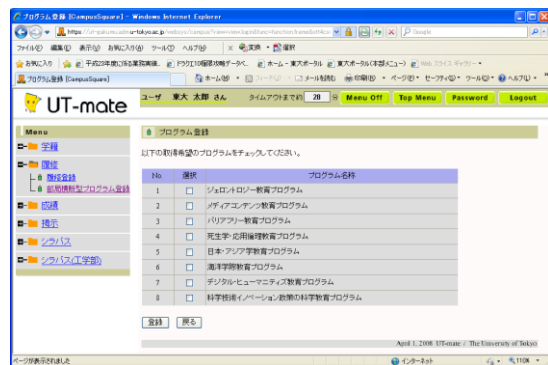
Select 「横断型プログラム修了証申請」 [University-Wide Education Program]



《学部学生：学部用プログラムのみ》
Undergraduates: displays only programs for undergraduates



《大学院学生：学部用・大学院用プログラム》
Graduates: both undergraduate and graduate programs are displayed



[University-wide Undergraduate / Graduate school Education Program]