

MPP/IP

Master of Public Policy, International Program

Two-Year Master's Program

Graduate School of Public Policy, the University of Tokyo

2018

GraSPP
THE UNIVERSITY OF TOKYO

In its 14th year, the Graduate School of Public Policy (GraSPP) celebrates a new era of excellence in its professional education and research in the field of public policy. The long-awaited completion of our new school building will provide an enhanced educational environment for an increasingly diversifying student body. In order to train policy practitioners to meet current and future demand, the school continues to upgrade interdisciplinary training with a balanced mix of law, politics, and economics, including classes offered by faculty members with practical experience, as well as hands-on training that draws on real-world case studies.

One of the key challenges we have been grappling with since the school's establishment is internationalization. With links between Japan and the rest of the world becoming closer and deeper, internationalization has become a vital feature of public policy education. We have taken active steps to incorporate this trend into our programs.

Another challenge has been to act as a bridge between the latest research and its real-world appli-

cation while taking advantage of external funding. We have therefore established policy research programs in fields such as international transportation, energy and the global environment, health technology assessment, capital markets, urban and regional development, education, and science and technology innovation. By linking up with extensive real-world networks, we were successful in undertaking advanced policy research and education. In parallel with these efforts, we are also taking a leadership role in cross-disciplinary programs across the university.

GraSPP is making steady progress to become one of the world's leading schools in its field. I hope that our students can make the most of these learning environments and transform themselves into public policy professionals.



Toshiaki IIZUKA
Dean
Graduate School of Public Policy
University of Tokyo

Since establishing the Master of Public Policy, International Program (MPP/IP) in AY 2010, we have welcomed a large number of top-level international students from all over the world. The MPP/IP offers students an opportunity to earn a master's degree with its completion requirements met by taking courses entirely in English. The share of courses offered in English now comprises about 40 percent of the entire curriculum and the number of international students has also climbed to roughly 40 percent of the total student body, making our school the most cosmopolitan out of all the other schools in the University of Tokyo. Over the past years, our alumni network has broadened its number, surpassing 199 from 39 countries and regions by the end of AY2016.

Our membership with the Global Public Policy Network (GPPN) provides students a chance to expand their frontiers for the future. Double-De-

gree and exchange programs with the world's top schools, including those under the Campus Asia program, also provide students with ample learning opportunities. Furthermore, our scholarship programs widen opportunities for promising young professionals from all over the world to join GraSPP.

We are continuously committed to academic excellence and high quality professional education in the field of public policy in partnership with leading institutions and professionals worldwide.



Akio TAKAHARA
Vice Dean
Graduate School of Public Policy
University of Tokyo

The two-year Master of Public Policy, International Program (MPP/IP) at the Graduate School of Public Policy (GraSPP) offers an extensive and diverse menu of courses taught in English. The program provides future global leaders with an opportunity to learn cutting-edge multidisciplinary approaches to addressing current public policy challenges.

The MPP/IP is designed for those who aspire to be globally competitive public policy practitioners equipped with professional knowledge and practical capacities. Our faculty consists of academics, who provide intellectual foundations, and policy practitioners, who share professional knowledge and experience with students.

MPP/IP students also have access to a broad range of courses offered by other graduate schools at the University of Tokyo. Moreover, the students have a chance to join exchange or double degree programs with top public policy schools around the world. Also readily available are extracurricular activities, including internship opportunities, facilitated by the school to enhance student exposure to and understanding of real-world challenges.



Some of Our Faculty Members

Chiyuki Aoi



Professor
(Academic Program Officer, United Nations University; JPO, United Nations High Commissioner for Refugees)
Insurgency and Counterinsurgency; Field Seminar in International Relations; Transformation of Warfare and Technology

My lectures focus on the changing character of warfare and how states and the community of states have tried to adapt to the resulting realities. How can we best understand the evolution of insurgency, now being waged globally, and the role of technology? How are stabilisation operations organized, to what effect? Drawing from my academic and professional experiences in the US, the UK/Europe, and in international organizations, I address these questions.

Jun ARIMA



Professor
(Director General, JETRO London; Deputy Director General, Global Environmental Affairs, METI; Head, Country Studies Division of the International Energy Agency)
Energy Security; Case Study (International Energy Governance)

Energy security with proper balance with GHG mitigation and economic efficiency is a daunting policy agenda for many countries. I am giving lectures on energy security and international energy governance based on my work experience in the Agency of Natural Resources and Energy, Ministry of Economy, Trade and Industry, the International Energy Agency and UN climate change negotiation.

Rudolfs BEMS



Associate Professor
(European Central Bank; IMF; Advisor, Bank of Latvia)
International Financial Policy; International Trade Policy; Economic Crisis; Case Studies (Current Global Economic Issues; Financial Crisis; Puzzles in International Economics)

My lectures focus on macroeconomic issues faced by policymakers in an increasingly interconnected world. How to deal with economic crises? How economic shocks and policy decisions spill across borders? I answer these questions by blending economic theory with my extensive work experience at the IMF and ECB.

Nobuhikio Fuwa



Professor
(Economist, World Bank; Consultant, IDE; JICA; International Rice Research Institute (IRRI))
Poverty, Inequality and Development; Econometrics for Public Policy

We welcome applicants with clearly defined career goals in international policy making or advising. I offer courses on econometric methods (which provide a fundamental building block for quantitative policy analyses of all kinds) and on development economics. The latter course draws upon both economic theory and empirical evidence for addressing the pressing problems of absolute poverty in developing countries.

Yee Kuang HENG



Professor
Field Seminar in International Relations; Security Studies; New Dimensions of Security in the Risk Age

From Syria to the South China Sea, security issues are high on the global agenda. Drawing from past research and teaching experience at universities in Britain, Ireland, and Singapore, I offer courses about International Relations, Security studies, and Security in a Risk Age.

Masahiro KAWAI



Professor Emeritus and Project Professor
(Chief Economist, East Asia and Pacific, World Bank; Deputy Vice Minister for International Affairs, Ministry of Finance; Dean, Asian Development Bank Institute)
Asian Financial Markets; Asian Economic Development and Integration; Case Study (International Financial Institutions)

I focus on Asia's economic development, regional integration, and financial issues based on my academic research and policy experiences. Throughout my courses I ask how Asian countries can maintain sound economic growth without accumulating financial and other vulnerabilities from theoretical, empirical and policy perspectives. I try to interact with students through in-class discussions.

Toshiro NISHIZAWA



Project Professor
(Director General of Country Credit Department, Japan Bank for International Cooperation (JBIC); Advisor, World Bank; Economist, IMF; Researcher, MOFA)
Sovereign Debt; Case Studies (Public-Private Partnerships; Finance and Development in Emerging Asia)

I always encourage students to look into real-world issues and form their own opinions. The aim is to help students bridging the gap between theory and practice. I offer courses based on my experience working at JBIC, IMF, the World Bank and Ministry of Foreign Affairs (MOFA). Every year I am impressed by intellectual capital developed and shared by students.

Kiichi FUJIWARA



Professor
International Conflict Study; Conflict Prevention and Post-conflict Politics; Japan in Today's World

Keisuke IIDA



Professor
Case Study (Japanese Foreign Economic Policy)

Daiji KAWAGUCHI



Professor
Econometrics for Public Policy

Hikaru OGAWA



Professor
Principles of Microeconomics; Economic Analysis of Public Sector

Hiroshi OHASHI



Professor
Advanced Industrial Organization

Roberto Orsi



Project Assistant Professor
Introduction to Social Science; Introduction to International Politics; Ethics and International Relations

Hideaki SHIROYAMA



Professor
(Advisor to the Cabinet Office)
Policy Process and Negotiation; Science, Technology and Public Policy; Social Design and Global Leadership; Case Study (Project Based Learning on the Medical, Environmental and IT Innovation and the Role of Public Policy)

Hiroshi Suzuki



Professor
(Member of House of Councillors; State Minister of Education, Culture, Sports, Science and Technology)
Social Design and Global Leadership; Case Study (Project Based Learning on the Medical, Environmental and IT Innovation and the Role of Public Policy)

Yoshito TAKASAKI



Professor
Development Economics: Microeconomic Approach; Natural Resources and Environmental Economics; Case Study (Poverty and Development)

Kenichi UEDA



Associate Professor
(Manager of International Finance Bureau, Ministry of Finance; Senior Economist, IMF)
International Financial Policy; Development Economics: Microeconomic Approach; Economic Crisis; Case Studies (Financial Crisis; Current Global Economic Issues; Financial Development and Inequality)

Visiting Professors

Hitoshi TANAKA

Visiting Professor (Deputy Minister for Foreign Affairs; Director General, Asian and Oceanian Affairs Bureau, Ministry of Foreign Affairs)
Case Study (Japan's East Asia Policy)

Nobuo TANAKA

Visiting Professor
(METI; Director, Science, Technology and Industry, OECD; Executive Director, IEA)
Energy Security; Case Study (International Energy Governance)

*Note: Former positions and affiliations are shown in parerthesis.

MPP/IP builds a foundation of professional knowledge and practical skills necessary to successful careers in government, business, international organizations and NPOs. The core curriculum is multidisciplinary, consisting of law, politics and economics. Together with case studies and practical training courses, the program prepares individuals to design, plan, implement and evaluate policies.

MPP/IP applicants are expected to demonstrate basic competence for learning law, politics and economics. MPP/IP consists of two policy streams, namely, Economic Policy, Finance and Development (EPFD) and Public Management and International Relations (PMIR).

***Note: Applicants who apply to either IMF-JISPA or JJ/WBGSP should select EPFD.**

Economic Policy, Finance and Development (EPFD)

EPFD offers courses suited for those who want to advance their careers in government, business, international organizations or NPOs in the field of economic policy, finance and development.

Public Management and International Relations (PMIR)

PMIR offers courses suited for those who want to pursue a career in government, business, international organizations or NPOs in the field of public management and international relations, including security policy and area studies.



EPFD		PMIR	
Basic Economics			
I. a), b) or c) a) <i>Microeconomics for Public Policy</i> b) <i>Microeconomics</i> c) <i>Microeconomics I and Microeconomics II offered by the Graduate School of Economics</i>		II. a), b) or c) a) <i>Macroeconomics for Public Policy</i> b) <i>Macroeconomics</i> c) <i>Macroeconomics I and Macroeconomics II offered by the Graduate School of Economics</i>	
		III. a), b) or c) a) <i>Statistical Methods</i> b) <i>Econometrics for Public Policy</i> c) <i>Econometrics I and Econometrics II offered by the Graduate School of Economics</i>	
Note: a) and b) in all categories must be taken with Practice Sessions.			
One course each from all three categories I-III	12 - 15 credits	Option 1: One course each from two of the three categories I-III	8 - 10 credits
		Option 2: All three courses below: a) <i>Principles of Microeconomics</i> b) <i>Principles of Macroeconomics</i> c) <i>Statistical Methods or Econometrics for Public Policy</i>	9 credits
Law and Political Sciences			
		a) <i>Politics and Public Policy</i> b) <i>Introduction to International Politics</i> c) <i>International Conflict Study</i> d) <i>Field Seminar in International Relations</i>	
Three courses including one of the compulsory elective courses from a) - d)	6 credits	Compulsory course a) and one compulsory elective course from b), c) or d)	4 credits
		Additional three courses from the designated list	6 credits
Case Studies 8 credits			
Minimum credits required for completion: 46			

For more details on courses, please check the following websites:
<http://www.pp.u-tokyo.ac.jp/en/education/courses/> (the whole list of courses)
<http://www.pp.u-tokyo.ac.jp/en/education/master-course/> (completion requirements)

Application Schedule for 2018 Enrollment

Admission Category	A* All applicants except B, C, D and E	B&C With ADB-JSP(B) and JJ/WBGSP(C)	D** With IMF-JISPA	E*** Under GraSPP-Sciences Po Double Degree Program (Joint Admissions)
Schedule				
Application Period	Oct 16 to Nov 30, 2017	Oct 16, 2017 to Jan 10, 2018	Oct to Dec 2017 (TBA)	Late Feb 2018 (TBA)
Document Screening Results	Jan 12, 2018	Feb 1, 2018	Mid-Feb 2018	Mid-Mar 2018
Interview Schedule	Feb 5 to 20, 2018	Feb 5 to 20, 2018	Mid-Mar 2018	Late Mar 2018
Admission Results	Feb 23, 2018	Feb 23, 2018	Mid-Apr 2018 through JISPA Office	Mid-Apr 2018
Final Results for Scholarships	N/A	Apr 2018		N/A

Notes by Admission Category:

- * Category A: Enrollment on April 1, 2018 is also available to limited applicants. Applicants with CAMPUS Asia Program option should submit a separate application to the CAMPUS Asia Program Office.
- ** Category D: Applicants with IMF-JISPA option should follow the instructions on IMF's website.
- *** Category E: Applicants under the GraSPP-Sciences Po Double Degree Program option should check MPP/IP website in early autumn for applying through Sciences Po online application system.



Schedule may be subject to change. For the latest information, please visit our website: <http://www.pp.u-tokyo.ac.jp/en/mppip/index.htm>

Scholarship Programs

○ : covered
- : not covered

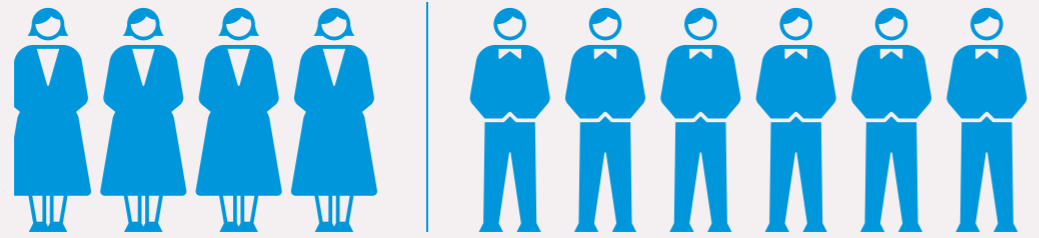
Admission Category	B JJ/WBGSP	C ADB-JSP	D IMF-JISPA
Tuition & Fees	○	○	○
Monthly Subsistence	○	○	○
Medical Insurance	○	○	○
Travel Expenses (One round trip economy class air travel)	○	○	○
Book Allowance	-	○	○
Thesis / Research Allowance	-	○	-
Computer / Software	-	-	○
Nationality	- Be a national of WB member developing country - Not hold a dual citizenship of a developed country	Be a national of ADB borrowing member country	Be a national of: Bangladesh, Bhutan, Cambodia, China, India, Indonesia, Kazakhstan, Kyrgyz Republic, Lao P.D.R., Malaysia, Maldives, Mongolia, Myanmar, Nepal, Pacific Island Countries, Papua New Guinea, Philippines, Sri Lanka, Tajikistan, Thailand, Timor-Leste, Turkmenistan, Uzbekistan and Vietnam
Notes for Work Experience	- Be employed in a paid and full time position at the time of application - Have, 3 years or more of recent development-related experience after earning a Bachelor's or equivalent degree	Have at least 2 years of full-time professional working experience (acquired after a university degree) at the time of application	- Currently working for: central bank, ministry of economy, ministry of finance, ministry of planning/development, ministry of trade/commerce, tax administration, national statistics bureau, financial regulatory agencies, or officials working in other areas of government - Minimum of 2-3 years' work experience in the public sector will be prioritized.
Website			

GraSPP at a Glance

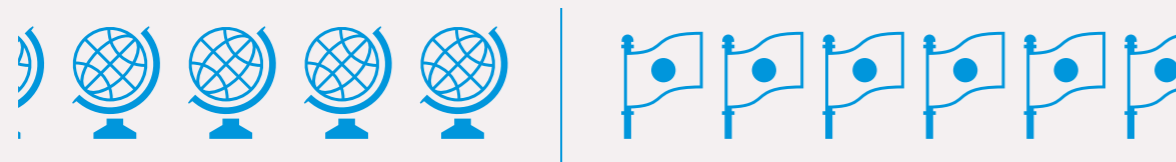
Network with Future Global Leaders

GraSPP is one of the most cosmopolitan graduate schools in Japan. About 40% of the student body is composed of international students from over 30 different countries (both advanced and emerging economies). Student backgrounds are equally diverse: many entrants have just completed undergraduate studies while others are professionals from a variety of fields in the public and private sectors. About 40% of all courses are offered in English. Allowing Japanese students to take the same courses in English together with their international classmates' forms the basis for strong friendships forged between Japanese and international students.

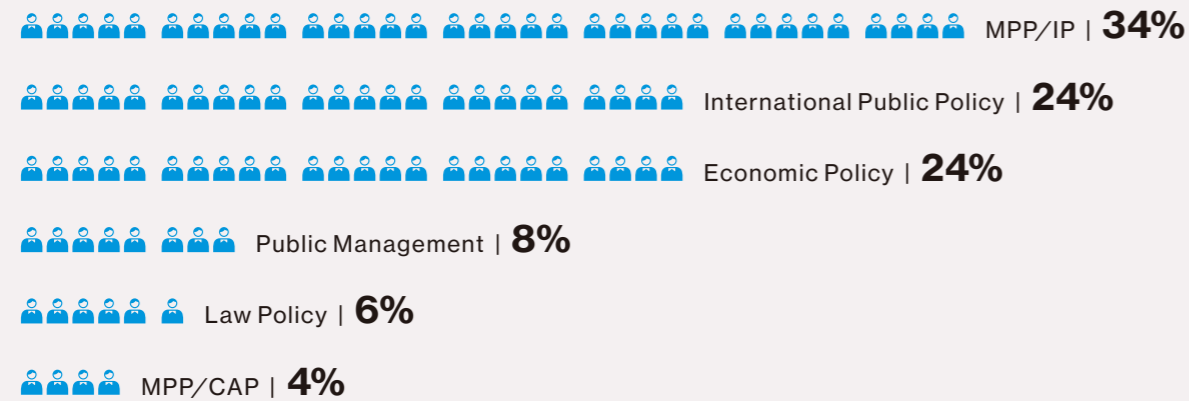
Female: **39%** | Male: **61%**



International students: **43%** | Japanese students: **57%**

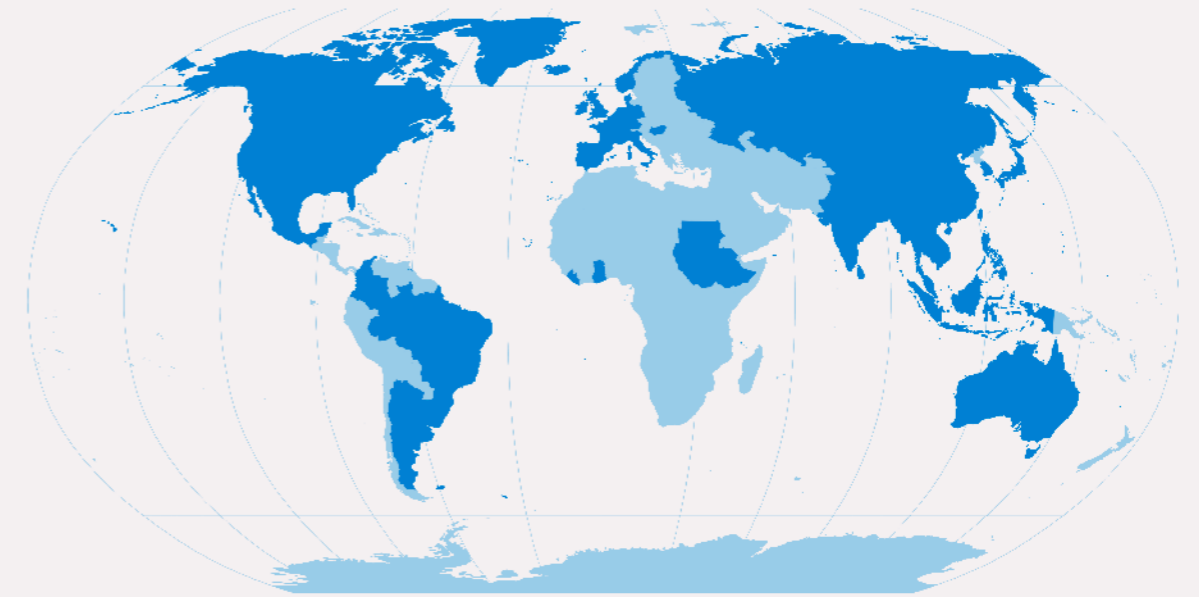


Programs

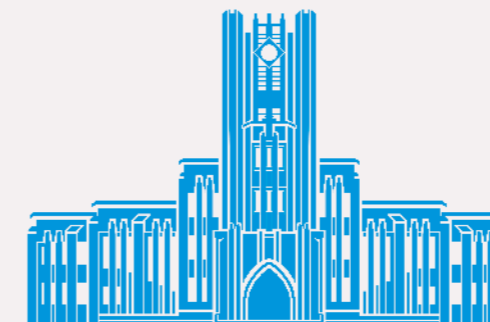


“At GraSPP, you may meet your future counterpart at an international negotiation table.”

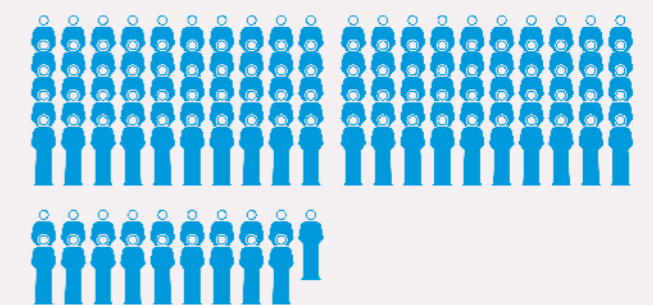
Students from **48** countries joined GraSPP since started



1355 - Total of GraSPP alumni all over the world



Ranked **The 11th**
Times Higher Education World Reputation
Rankings 2017



199
Faculty members

School Life at GraSPP

12

Campus



GraSPP is located in the Hongo Campus, the University of Tokyo's main campus, in Bunkyo-ku, Tokyo, which occupies about 56 hectares of the former Kaga Yashiki, the Tokyo estate of a major feudal lord. Parts of the 17th century landscaping of the original estate have been preserved to provide greenery and open space.

Library



The University of Tokyo Library System is composed of about 40 libraries, including the General Library, the Komaba and Kashiwa Libraries, and departmental libraries. The General Library is the system's main coordinating body. Each faculty / institution's library has a large number of materials in their respective specialized fields.

Gotenshita Memorial Arena



At the Hongo Campus, the "Gotenshita Memorial Arena" can be used for table tennis, badminton, futsal, volleyball, basketball, and swimming. It also has training equipment that can be used. The admission fee is 400 yen per use, with long-term passes also available.

Accommodation



The following are options for accommodation:
 -UTokyo Dormitories (a limited number of vacancies)
 -Shared House
 -Furnished Apartment
 -Unfurnished Apartment

International Student Adviser



International Student Advisers provide advice to international students regarding their visa, accommodation, daily life, private scholarships and other issues. There are also counseling sessions during the first term for all newly enrolled international students.

Supporting Tutor



The University of Tokyo offers a tutoring program for each newly arriving international student. This program assigns a Japanese or international student as your supporter who can help you to get settled into your new life in Tokyo and on the Hongo Campus.

Japanese Language Course



The University of Tokyo's Center for Japanese Language Education provides an opportunity to learn Japanese for international students and their spouses.

International Students' Trip



GraSPP organizes a one day trip every autumn to provide international students, especially those who have just arrived in Japan, with opportunities to experience Japanese culture. Students enjoy sightseeing through historical spots in Japan.

Internship Opportunity



GraSPP offers summer and winter internship opportunities at major companies and government-related organizations for international students studying at GraSPP.



Student Voices

13

Anudari Dashdorj Mongolia



MPP/IP 1st Year, IMF Scholar
Ministry of Finance, Mongolia



Life at GraSPP has been an incredibly intellectually challenging yet tremendously rewarding experience so far. Multidisciplinary courses, world renowned faculty, vibrant international community, and historic Hongo campus – all at the academic epicenter of Japan, are only a few of the countless reasons I would raise to highly recommend MPP/IP to anyone who is pursuing to make a difference and tackle global challenges head-on.

Htein Lin Aung Myanmar



MPP/IP 1st Year, World Bank Scholar
Assistant Director, General Administration
Department, Ministry of Home Affairs, Myanmar



I felt a thirst for knowledge of public policy affairs to contribute to Myanmar's people. GraSPP provides me with the most precious opportunity to fulfill my needs. Courses are designed with a good balance between professional knowledge and practical experiences, and are offered by renowned professors and practitioners. The warm-hearted student support, a comfortable atmosphere for international students with diverse backgrounds, and life in the historic campus are all my ideals.

Mohd Jawed India



MPP/IP 2nd Year, World Bank Scholar
Delhi Metro Rail Corporation



A policy maker's quiver should never run dry. There is no policy panacea to suit all challenges in diverse forms and magnitude in different regions and points in time. MPP/IP is a balanced blend of theory and practice from a multitude of disciplines, provides a highly internationalized environment replete with cultural, educational and professional diversity, equips the students with a global outlook in dealing with the interdisciplinary nature of challenges, and draws on the expertise of erudite professors and seasoned practitioners for educating the policy makers of the future.

Shen Wenguan China



MPP/IP 1st Year, Diplomat
Ministry of Foreign Affairs of China



During the spring break, I was selected to have a two-month internship at the Institute for International Monetary Affairs (IIMA). IIMA helped me carry out a research on the Bitcoin regulations in China and contribute to the published report, which was quoted by Japan Times.



Double Degree and Exchange Programs

We are actively engaged in international exchange, with a current total of thirteen partner schools. Students at both GraSPP and partner schools can enjoy the opportunity to enroll in a diverse range of classes together whilst creating new friendships and experiencing each other's culture. Under the double degree programs, students can obtain degrees from both GraSPP and the partner school upon satisfying the graduation requirements of both degrees.

	Partner Schools:	Exchange	Double Degree
GPPN	SIPA, Columbia University	N/A	○
	Lee Kuan Yew School of Public Policy, National University of Singapore	○	○
	*Sciences Po, Paris Joint admission	○	○
	Hertie School of Governance (HSoG)	○	○
	Fundação Getulio Vargas (FGV) - EAESP	○	N/A
	London School of Economics and Political Science (LSE)	N/A	○
GPPN	GPS, University of California, San Diego	○	N/A
	Heidelberg University	○	N/A
	HEC Paris	○	N/A
	IAS, United Nations University	○	N/A
	Crawford School of Public Policy, ANU	TBC	○
	GSIS, Seoul National University	○	○
	SIS, Peking University	○	○

GPPN (Global Public Policy Network)



GrasPP is a member of the Global Public Policy Network (GPPN), a partnership among seven top public policy schools from around the world. GPPN is a platform for institutional partnership, research collaboration, and student exchange.

CAMPUS Asia Program



The CAMPUS Asia program has been initiated by trilateral cooperation of the governments of China, Japan and South Korea. The BESETO Consortium comprised of Peking University, Seoul National University and the University of Tokyo offers an unprecedented three-way double degree and exchange program in the fields of International Studies, Law and Public Policy in East Asia. Participating Japanese students will be provided with financial support from each government.

*GraSPP - Sciences Po Double Degree Program



This two-year double degree program with Sciences Po's School of Public Affairs is designed for young professionals who want to gain an expertise in the management and evaluation of public policy in both Japanese and the European contexts. Students are selected through joint admissions by GraSPP and Sciences Po. Candidates must apply via online at Sciences Po's website. The First year students will study in Paris and second year in Tokyo.



Nathan Rasquinet



Belgium
MPP/IP 2nd year
DD student to LSE



One of the distinctive features of the MPP/IP at GraSPP is the sheer number of opportunities it presents to broaden your horizons while undertaking your academic degree. Pursuing the Double-Degree between the University of Tokyo and the London School of Economics allowed me to experience the most diverse range of courses and policy areas from world class practitioners, experts and academics. The Double-Degree made my time on the MPP even more fulfilling and valuable.

Taichi Yokoyama



Japan
MPP/IP 2nd year
Exchange student to LKY



I had the great fortune of studying at the LKY School for a semester. The classes discussed cases in Southeast Asia, which broadened my horizon and deepened my understanding of Japanese policies through comparison. There were countless opportunities to meet fascinating students and professors through the many events and the dormitory life. I am grateful for the enriching experience that will surely be meaningful in my academic and professional life.

Haemin Choi



Korea
CAMPUS Asia Alumna / Researcher and Project Manager, NEAR Foundation



My name is Haemin Choi, the first Campus Asia student from Seoul National University to GraSPP. My life as a Campus Asian completely changed the stereotypes and prejudices I had on East Asia. As a result, I proudly got my job as a project manager for Korea-China-Japan reconciliation, Co-existence and co-prosperity based on my experiences. Please keep in mind that a thousand hearings are not worth one seeing; 百聞は一見に如かず. Go out and search your own Asia.

Suteera Sitong

Thailand



Class of 2013
Senior Economist
Fiscal Policy Office
Ministry of Finance



The diversity of the student body at GraSPP has broadened my view and allowed me to understand the complexity of working with people from different cultures and careers. This understanding has prepared me well for the current responsibilities in designing policies involved with other countries. After two years at GraSPP, I realize that I am not alone anymore when I am abroad. Many former classmates and professors have become people I can rely on. I am thankful that wherever I visited, "GraSPPers" were there to provide me with good friendship, professional advice, and kind support to ease the challenges I faced.

Suman Dahal

Nepal



Class of 2013
Deputy Director General
Department of Customs



MPP/IP revolutionized my life, broadened my arena of knowledge and skills, and deepened my views towards governance and public policy issues. With the renowned faculty members, this program provides various opportunities for students to flourish through gaining different knowledge and skills via case studies, class presentation, report writing, educational excursions and multicultural social gatherings. Back in government, I acquired a promotion through competitive examination to work at the National Reconstruction Authority and now at the Ministry of Finance as a Chief Tax Administrator. If truth be told, I expect that many talented brains from all over the world have a chance to study at GraSPP and make their future bright.

Ami Fujimoto

Japan



Class of 2013
Associate, Financial
Advisory Division
Financial Service
Department
KPMG AZSA LLC



When I joined MPP/IP, I was a fresh graduate with a bachelor's degree in economics, but my future was described still in vague terms. I chose to continue studying to find out my goal. In a multicultural learning environment, student life at GraSPP cultivated the attitude of lifelong learning and opened up great possibilities for my future career. I have acquired two essential skills: cross-disciplinary approaches to problem-solving and a 'never stop learning' attitude. Not only for those eagerly in pursuit of a public policy career but also for those who have not decided the goal despite the interest in public policy, GraSPP is an ideal place to cultivate your potential and expand future possibilities. If you grab the right opportunity at the right time, success will surely follow!

Sanjar Shavkatovich Valiev

Uzbekistan



Class of 2014
Head, Middle Office
Central Bank of
Uzbekistan



Education is a lifelong process starting from learning the alphabet and accumulating knowledge and skills little by little, which is essential for one's self-fulfillment. My experience tells that the cognitive atmosphere among students and teaching staff at GraSPP gives an impulse to this process. In my view, the consistent combination of the following two features makes MPP/IP attractive and demanding: its teaching staff, both academics and practitioners, who provide a wide understanding of theoretical basics along with alternative views on current challenges in the field of public policy, and its well-balanced curriculum with a broad range of courses to meet requirements of both beginner-level and advanced-level students. I re-joined my team back at the Central Bank, I continue to believe that GraSPP is a place one can get inspired to study.

Gemma Aquino Bala

Philippines



Class of 2015
Senior Economic
Development Specialist
Monitoring and Evaluation Staff
National Economic and
Development Authority (NEDA)



I earned a Master of Public Policy degree with the scholarship from ADB-JSP in 2015. After my study, I returned to my home country and resumed work as part of the team that monitors and evaluates national development projects and provides policy guidance in the conduct of monitoring and evaluation. My stay in GraSPP allowed me to improve my skills on policy analysis and evaluation. With the inclusion of practical case studies and electives in its curriculum, I believe that MPP/IP can aid students in mastering economic tools and political theories necessary in effective policy development.

Kieran Hull

UK



Class of 2015
Credit Analyst
MUFG



Asia is the most populated and fastest growing continent in the world. To have a strong understanding of the world, you need a strong understanding of Asia. As a European, studying public policy at GraSPP gave me an opportunity to learn things I could not have learnt in my own country, and to interact with a highly diverse range of people. To be able to do all this in an amazing city like Tokyo meant there was always new things to do, new challenges to overcome and new goals to achieve. At GraSPP, you'll never be bored!

Nicolle Aya Konai

Brazil



Class of 2015
Consultant
The World Bank



After completing the Double Degree Program between the University of Tokyo and Columbia University, I had the opportunity to join the World Bank Group as a consultant at its headquarters in Washington DC. Not only providing me with substantial knowledge and hard skills necessary to my professional success in the development field, GraSPP also prepared me to work in a multicultural environment where cultural sensitivity and interpersonal skills are key. I had a very positive experience in Tokyo and will always be grateful for the support of friends, professors and staff at GraSPP.

Nguyen Duong

Vietnam



Class of 2016
State Bank of Vietnam



As a master's student at GraSPP, the time I spent there is one of the memories that I will cherish for the rest of my life. I had regular contact with leading professors and practitioners in their respective fields, made friends with admirable peer students of various nationalities and backgrounds, and thus expanded my networks. Now back in the country, I have made progress in my job as reflected by my improved qualities, and have successfully made recommendations for better policy making in the fields of international economy and financial markets.

Faela Sufa

Indonesia



Class of 2016
Business Development
Executive
Power and Energy-
related Project
Sumitomo Corporation



During my journey at GraSPP, my focus is mostly in energy policy. Because of Fukushima nuclear accident in 2011, Japan has been struggling with its energy crises. Thus, learning directly and closely from the world's renowned energy experts in GraSPP, such as from Nobuo Tanaka and Jun Arima had been a real privilege for me. GraSPP also gives fundamental economic knowledge, which is undeniably useful for policy makers in any field. Most importantly, studying in GraSPP at The University of Tokyo gives me broad networking opportunities to many great minds. This experience wouldn't be possible without the support from LPDP scholarship*. (*LPDP scholarship: Indonesian government scholarship program dedicated to the best of Indonesian youth)

Study at the University of Tokyo

Tradition in Excellence

As a leading research university with over 4,000 faculty members and nearly 30,000 students, the University of Tokyo offers courses in essentially all academic disciplines at both undergraduate and graduate levels. The University of Tokyo is well known not only for its cutting-edge research across the full spectrum of academic disciplines, but also for providing students a learning environment ideal for both intellectual and professional development. Many of the school's graduates have later become leaders in government, business, and the academic world.

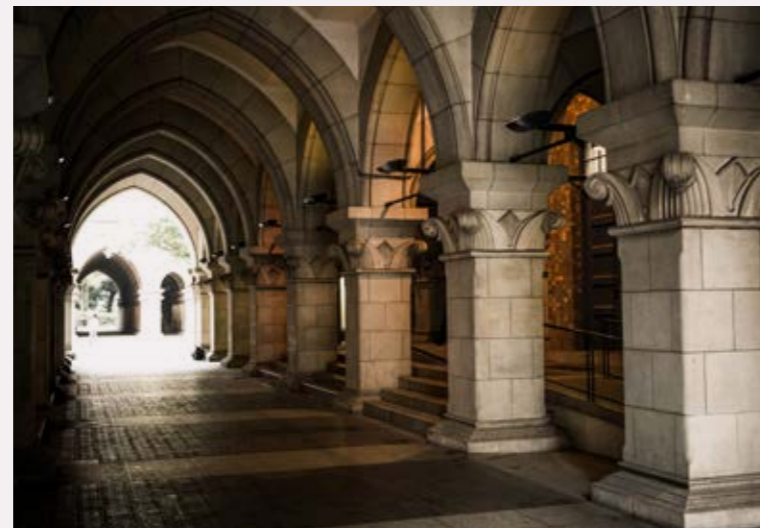
Ideal Location

The main campus of the university has a rich and long history, and is located in Hongo, Bunkyo-ku, Tokyo, steps away from Kasumigaseki, the government district, and Marunouchi, an economic hub of Tokyo. The school's convenient location near the heart of Tokyo offers students easy access to leading practitioners.

PhD in International Public Policy at GraSPP

The doctoral program has launched from AY2016. The main research areas of the doctoral program are International Finance and Development, and International Security. The program aims to nurture highly skilled researchers in law and politics and economics. In addition, it aims to foster cross-cutting, multidisciplinary and practical skills for policy-making.

For more information,
<http://www.pp.u-tokyo.ac.jp/en/education/doctoral-course/>

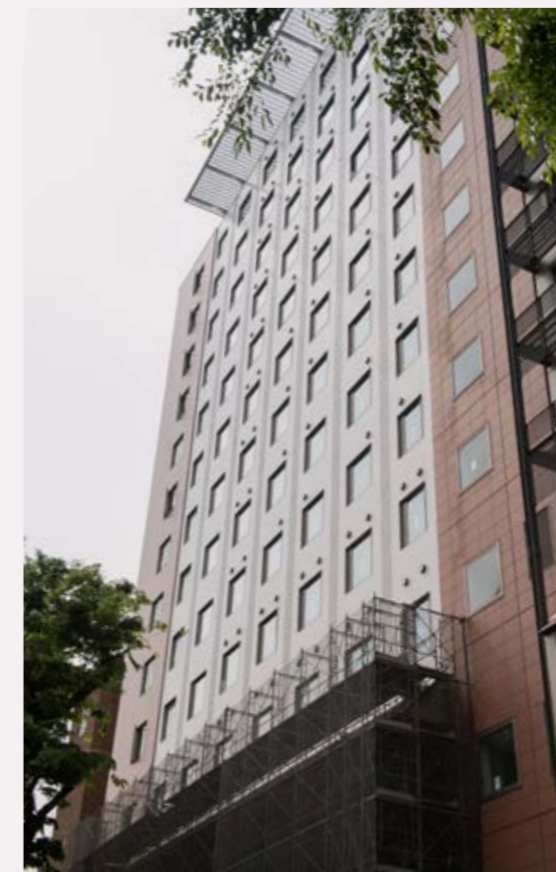


MPP/IP
Master of Public Policy, International Program

Contact us:

Graduate School of Public Policy
 The University of Tokyo

Address:
 7-3-1 Hongo, Bunkyo-ku
 Tokyo 113-0033
 JAPAN
 Tel: +81 3 5841 1349
 Email: mppip@pp.u-tokyo.ac.jp
<http://www.pp.u-tokyo.ac.jp/en/mppip/>



02	Deans' Message
03	Overview
04-05	Faculty
06-07	Curriculum
08	Application Schedule for 2018 Enrollment
09	Scholarship Programs
10-11	GraSPP at a Glance
12	School Life at GraSPP
13	Student Voices
14-15	Double Degree and Exchange Programs
16-17	Alumni Voices
18	Study at the UTokyo/PhD Program
19	Access+Contact Info

Starting from
September 2018



Application Period

—
World Bank & ADB Scholarships
October 16, 2017 - January 10, 2018

—
IMF-JISPA Scholarships (apply to IMF directly)
October - December 2017 (TBA)

—
All applicants except WB/ADB/IMF Scholars
October 16 - November 30, 2017

